

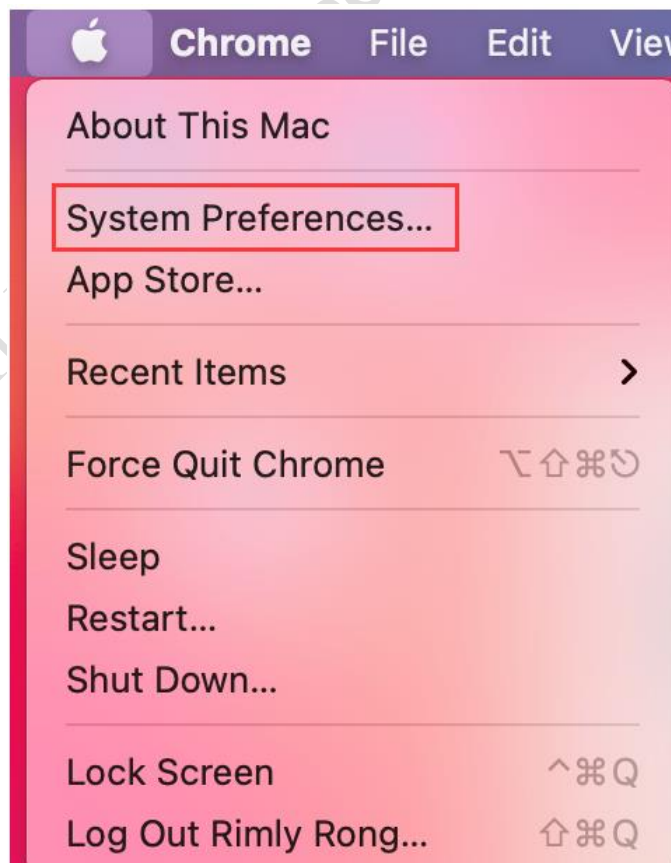
Steps for Adding the Network Printer (Mac OS)

Before proceeding on the setting, please notice below items in advance:

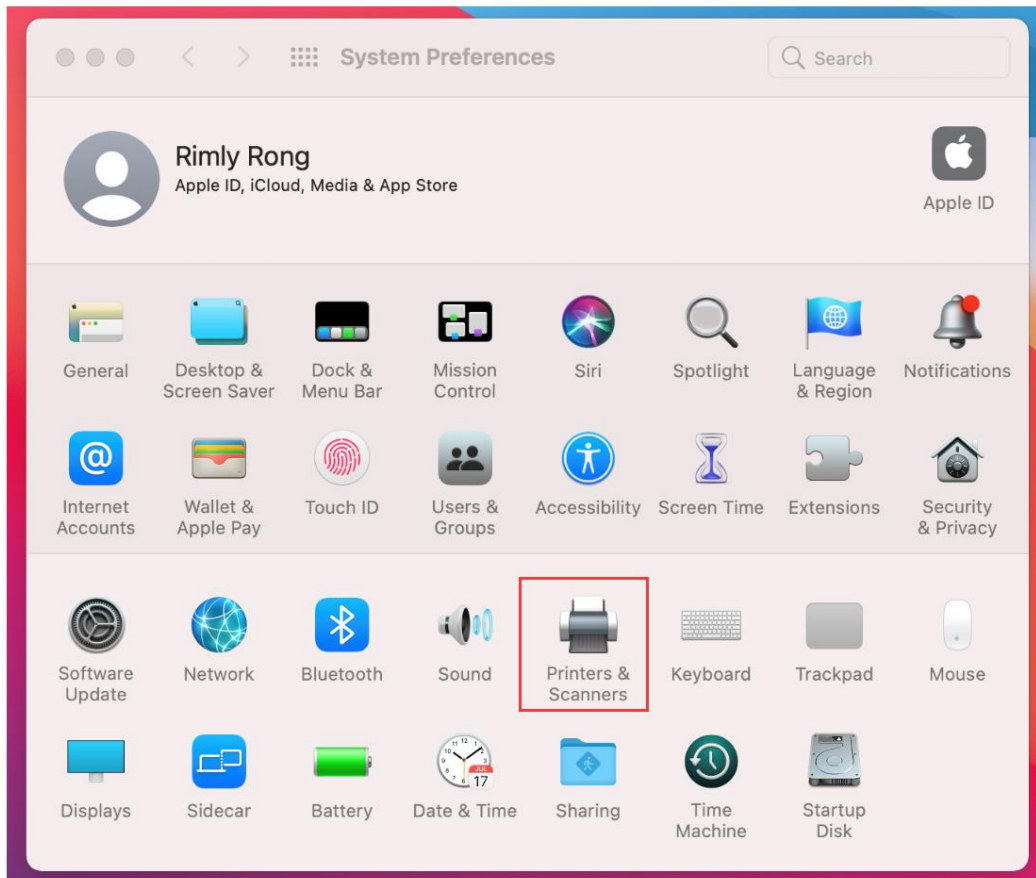
1. Make sure the MAC computer can print directly when connected to the printer.
2. MAC System can recognize the printer which with 9100 Port only, and unable to recognize the printers which with 9101/9102/9103 Port.
3. MAC System support most of the brand printers such as HP, Brother, Samsung; Support few limited models for Canon and Epson.
4. MAC System support to print via HP Jetdirect-Socket Protocol, not support the IPP,LPD Protocol

Steps for MAC system to add the printer:

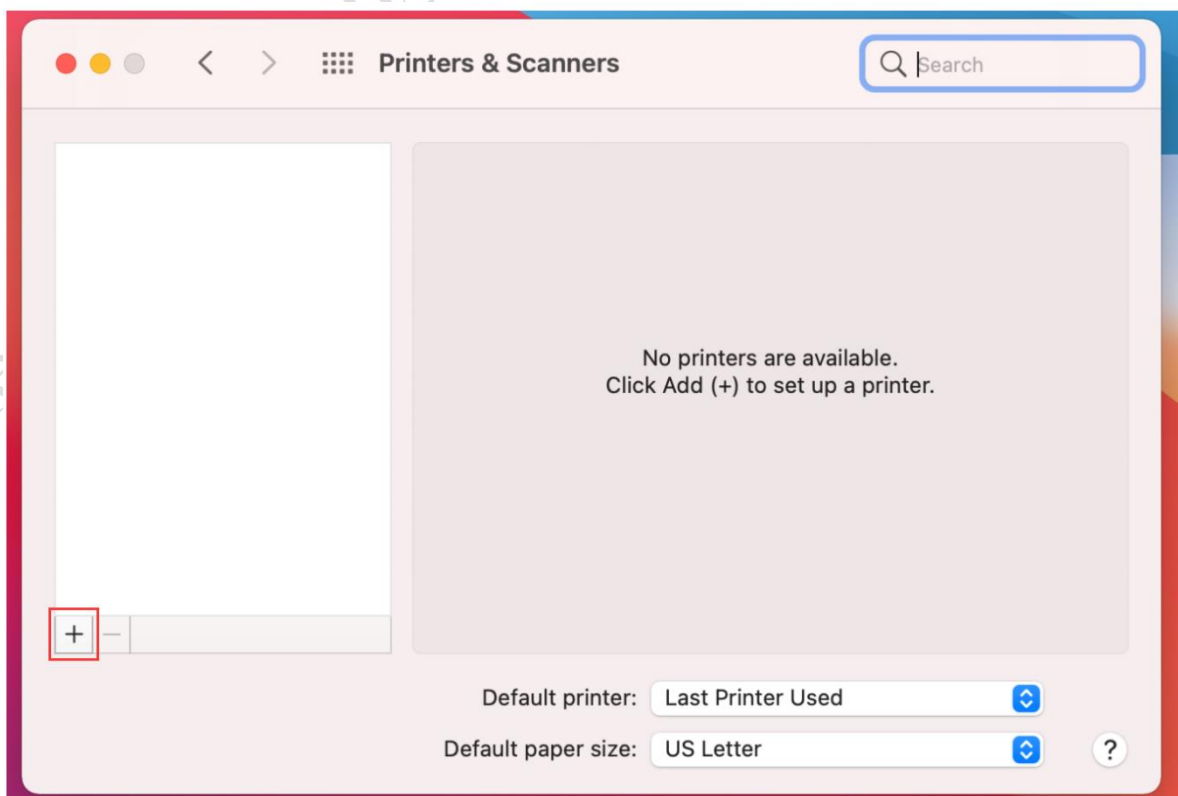
S1. Choose the “System Preferences”:



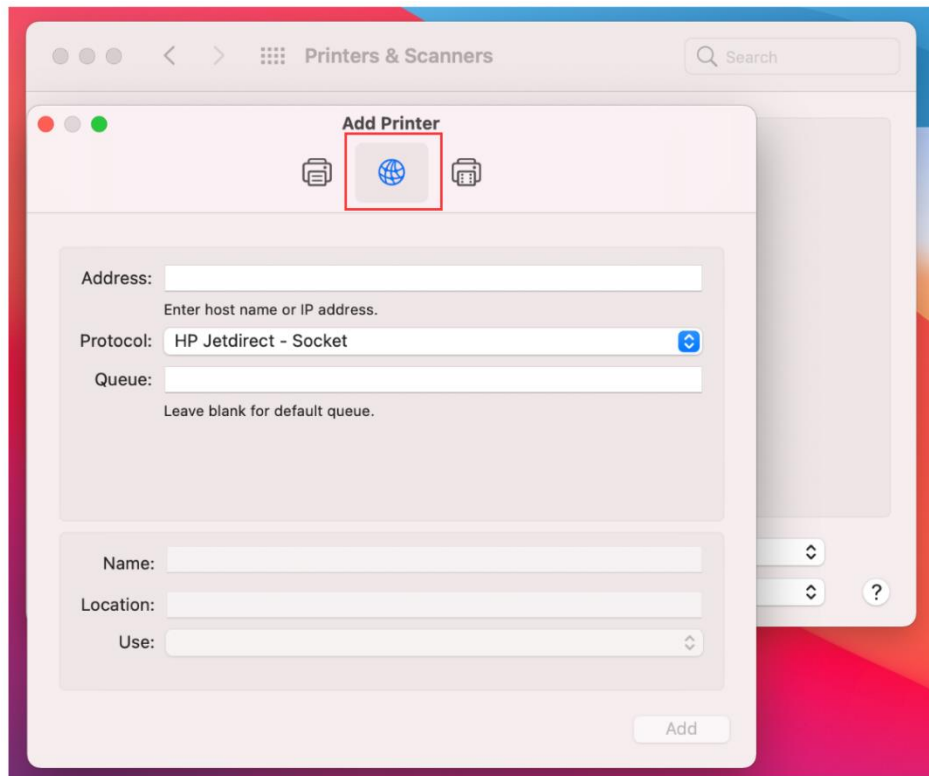
S2.Choose the “Printers & Scanners”



S3.Click“+”, to add the Printer

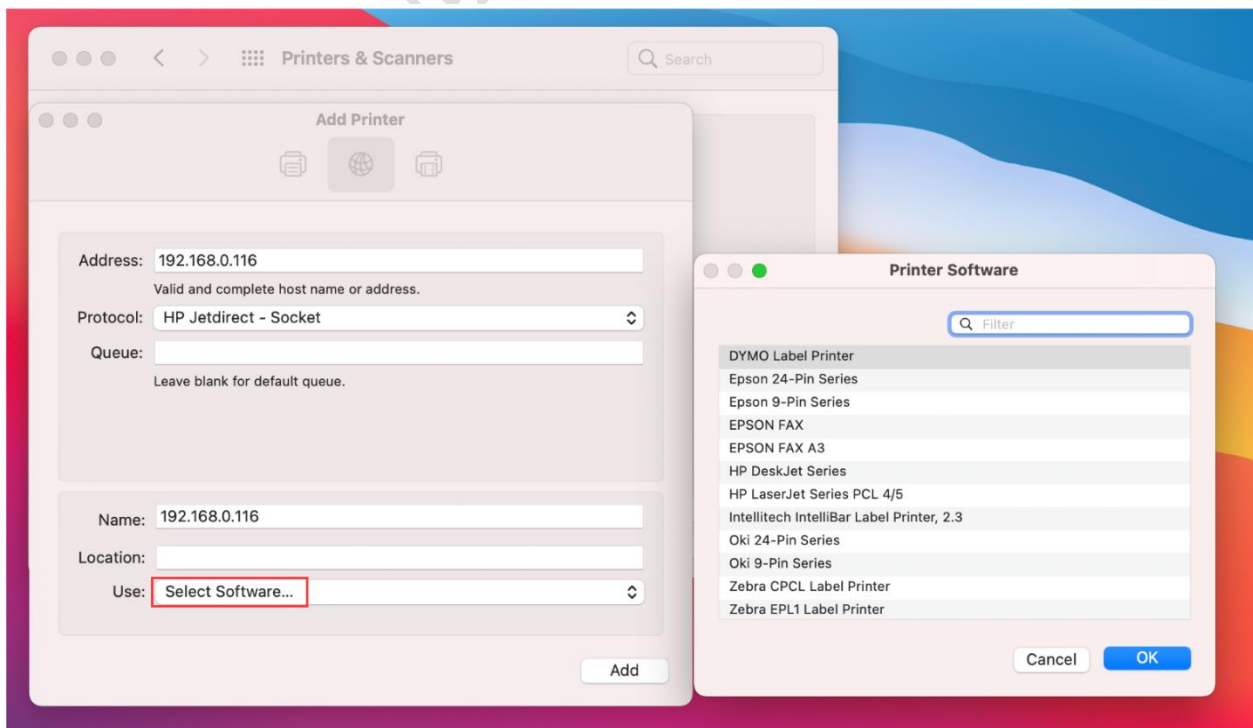


S4.Choose the “IP” Option, to fill in the printer information

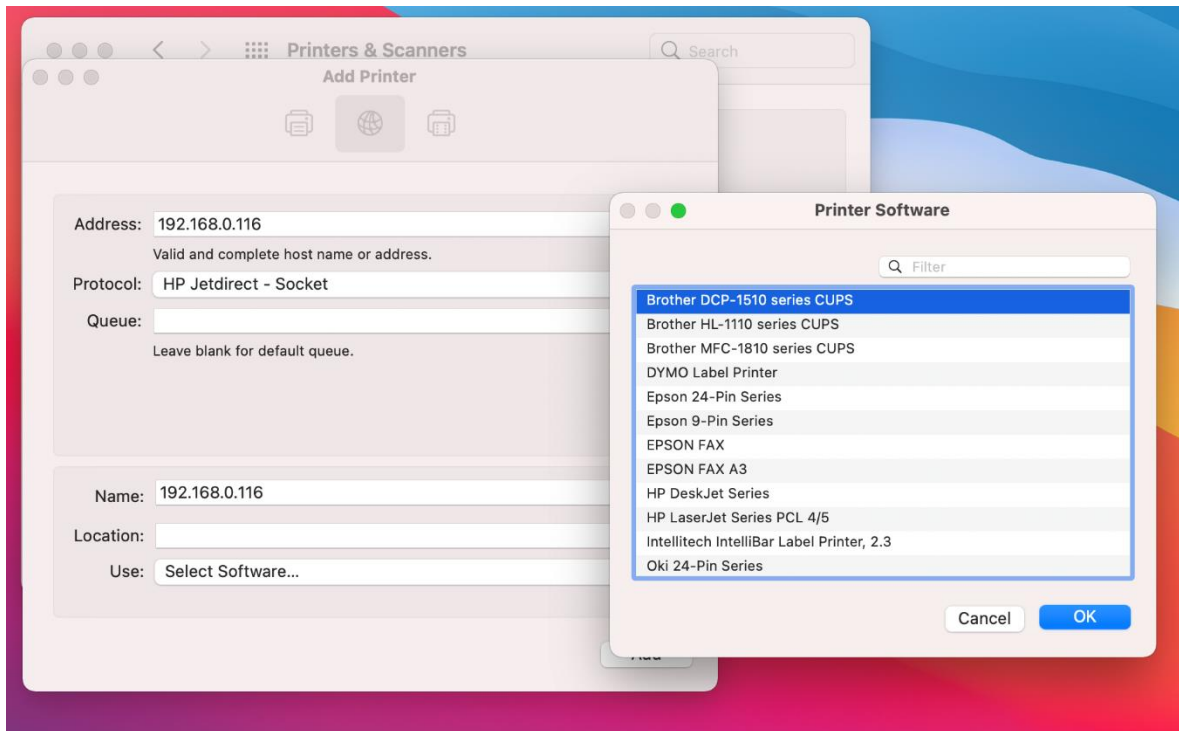


Remarks:

- ***Address:** Input IP Address or Host Name (the print server IP address)
- * **Protocol:** HP Jetdirect-Socket (HP and other printer manufactures are using this protocol)
- * **Use:** Select Software
- * For other items just keep the default options.

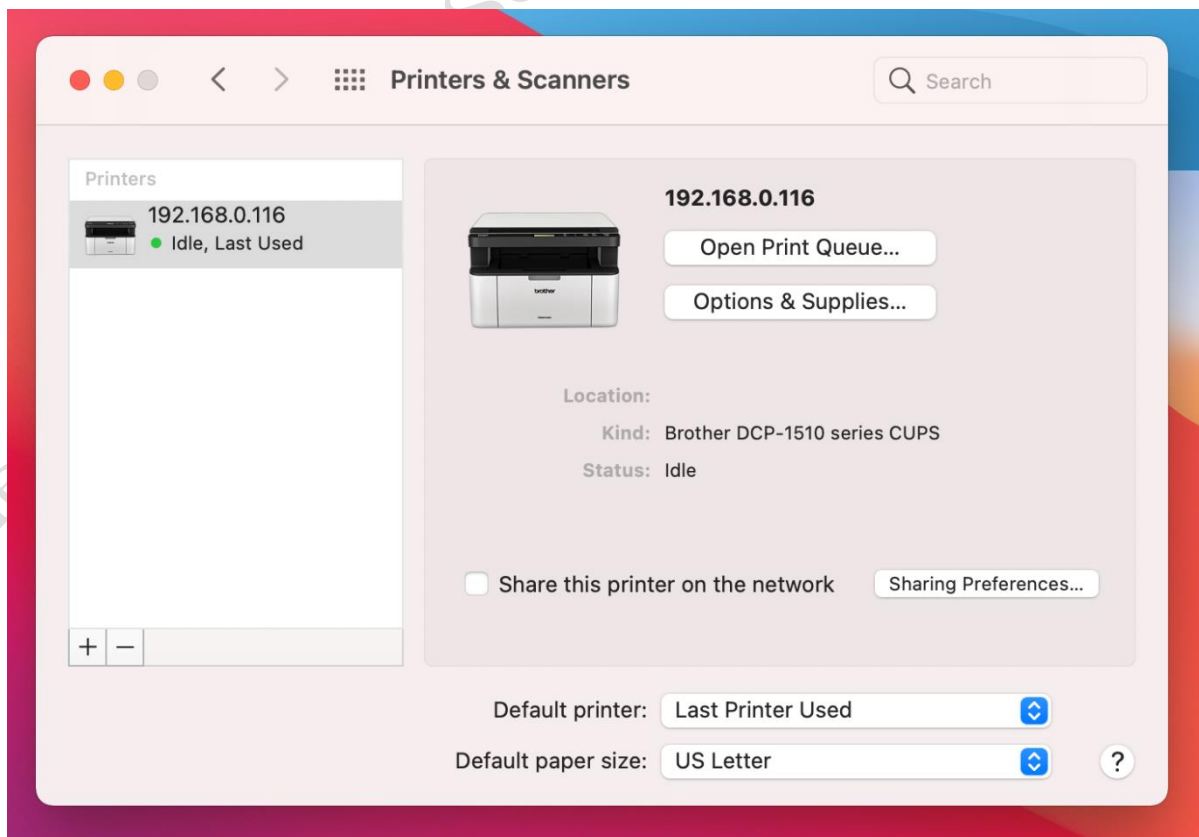


6. Choose the right printer software from the listing. You can use the “Filter” function for quick search. If you can not find your printer software from existing listing, please go to the printer’s website to download the MAC driver. After finding your printer software, please click “OK”



7. Finish the printer software installation

(The Brother DCP-1510 printer can print now)





Printer Model	MAC OS	Windows OS	Remarks
EPSON Lxxx	No	Yes	
EPSON L358 Series	No	Yes	
EPSON L350 Series	No	Yes	
EPSON L355 Series	No	Yes	
Epson ME office 1100	No	Yes	
MFC-8530DN	Yes	Yes	Common PostScript Printer
Samsung CLP-360	Yes	Yes	Printer connect to the MAC for driver installation, after that connect to the print server
HP LaserJet Pro MFP M126a	Yes	Yes	Choose LaserJet Pro MFP M126a during the installation
HP LaserJet Pro MFP M125a	Yes	Yes	LaserJet Pro MFP M125a
FX DocuPrint M158b	Yes	Yes	FX DocuPrint M158
HP LaserJet M1005	Yes	Yes	HP LaserJet M1005
Lenovo M7150F	Yes	Yes	Lenovo M7150F
FujiXerox DocPrint CM215	Yes	Yes	FX DocPrint CM215 b v1.071
HP LaserJet Pro M1136	Yes	Yes	HP M1136 1.7 the Print Queues cannot be deleted automatically after the task is printed(Solution: Click Bi-directional via the printer setting menu)
Brother MFC-7470D	Yes	Yes	Brother MFC-7470D CUPS
Brother MFC-7340	Yes	Yes	Brother MFC-7340
Brother DCP-1510	Yes	Yes	Brother DCP-1510 Series CUPS
Samsung SCX-4321	Yes	Yes	Samsung SCX-4321
Samsung ML-1670	Yes	Yes	Samsung ML-1670
Brother DCP-7080	Yes	Yes	Brother DCP-7080 CUPS
HP LaserJet Pro M1136	Yes	Yes	HP LaserJet Pro M1136 MFP Server 1.7
Brother MFC-7360	Yes	Yes	