

Wireless WiFi Bluetooth Network Print Server with 3 USB Ports

LY-MPS-WB03 is a **Wireless WiFi Bluetooth Network Print Server** which with 3 USB 2.0 Interfaces, it's an external device that can be used to share one or multiple printers among multi-users of a wireless network simultaneously. The WiFi Printer Server enables its possibility for users to send print jobs to one or several remote printers any time anywhere via a computer or smartphone. With LOYALTY-SECU 3-Port Wireless USB Print Server that you can choose the most convenient location to keep your printers, whether at home or office, and no longer held back by the length of a USB cable.

LOYALTY-SECU LY-MPS-WB03 **WiFi Bluetooth Network Print Server** supports USB printer printing via Bluetooth when there is no network or wired infrastructure is costly or unreasonable. Allowing a computer or smartphone or other PDA send the print jobs to the connected USB printers via Bluetooth technology.

With LY-MPS-WB03 **WiFi Bluetooth Ethernet USB Printer Adapter**, there is no need for a dedicated computer anymore, everyone on the network is empowered to print to a shared printer at any time, avoids the added cost of purchasing individual printers for each workstation or area, cost, and energy saving.

LOYALTY -SECU



Product Highlights:

- Wireless WiFi Bluetooth Print Server with 3 USB Ports
- CPU: ARM9 32-bit; Operating system: LINUX 3.4
- Product Size: 75*75*18mm; Product weight: 30g
- With **Print and Scan** function
- **Upgraded and user-friendly Config Tool**
- Economical & perfect solution for users who owned several USB printers
- WiFi Function: Compliant with 802.11b/g/n wireless networks
- Bluetooth Function: Classic+BLE4.0 Mode
- With Bluetooth function to enable printing for users without network connections
- Support to connect 3 PCS USB Printers simultaneously
- With simple config tool for parameter configuration and devices management
- Multi-Users sharing one or multi-Printers of a wireless network simultaneously.
- Strong compatibility (99%) with most majorities of printers on the market
- Support to print the Word, Excel, PDF, Image format or other format files via smartphone directly
- With external TF Card Slot, Max support 256GB
- Equipped with 1 PCS 10/100 Mbps RJ-45 LAN Port

Workable Printer Types:

Inkjet Printers, Label Printer, Barcode Printer, Impact Printer (Dot Matrix Printing)
Thermal Label or Receipt Printer, Laser Printer, Multifunction Printer (MFP), and so on.



USB Print Server with Bluetooth & WiFi

Product Main Features:

1. **Cost-Saving:** Allowing to connect to 3 PCS USB Printers simultaneously
2. **With Print & Scan Function**
3. Upgraded and user-friendly Config Tool
4. WiFi Function, allowing the USB printer to achieve true wireless connection in seconds.
5. **Bluetooth Function:** to enable printing for users without network connections
6. **Internet Connection:** WiFi or Bluetooth or RJ45 LAN
7. **High Efficiency:** Economical & perfect solution for users who owned several USB printers
8. TYPE-C USB Interface for Power Supply and Parameter Configuration
9. **Quick Installation:** No need to install any driver, with simple config tool for parameter configuration and devices management ,ordinary USB LPR printers becomes the network printers in seconds.
10. **Mobile Printing:** Support to print the Word, Excel ,PDF ,Images format or other format files via smartphone directly
11. **Strong Compatibility:** compatible with more than 99% of the brand USB printer on the market, standard USB 2.0 interface, can be upgraded by software to compatible with newly launched printers.
12. **Bluetooth Technology:** Bluetooth (Classic+BLE4.0)
13. **Work as an External Device:** can be used to share one or multiple printers among multi-users of a wireless network simultaneously.
14. LOYALTY-SECU 2 Year Warranty and free lifetime technical support.
15. **Intelligent Performance:** CPU: ARM9 32-bit, Frequency: 300MHz, Flash: 128MB ,Memory:64MB SRAM ,Operating System: LINUX 3.4
16. 4G &Cloud Print function is available for customization
17. **Data Storage:** With external TF Card Slot, Max support 256GB. Applied to the government or other law enforcement agencies for authorization and backup, query of printed documents.
18. Support Windows 2000/2003/XP/Vista/7/8/10 computers ,Android devices to share and print simultaneously.
19. **Compatible with Mac OS system but must be configured with Windows System first.**
20. **Please Pay Attention, IOS System (iPhone, tablet) Is Not Support!**

Application:

Small and medium-sized companies, schools, households, stock markets, education, express companies, e-commerce companies, etc.

Product Package Items:

1PCS* 5V/1A Power Adapter

1PCS* User Manual

1PCS* USB Print Server

TD

High Compatibility

Support 99% of brand USB printer in the market, more detailed info, please kindly inquiry our after-sale team



Ink-jet printer

Multi-port USB print server

Laser printer

Barcode label printer

Stylus printer

Thermal/label/ticket printer

Multi-function printer

ARM 32-bit ARM9 CPU

How to make your USB Printer Work with USB WiFi Bluetooth Print Server Quickly?

For Printing in LAN:

Step 1: Please download “Print Server Config Tool” from our business site into your Windows computer.

Step 2: Please connect Print Server with Your Windows computer via USB cable.

Step 3: Please assign a fixed IP address for the USB Print Server via “Print Server Config Tool” on Windows computer firstly.

Step 4: Add the IP address and USB port information of print server into your target USB printer in your computer. Then you can explore the excellent printing experience via the Print Server.

Step 5: Download and install APP “PrinterShare” or “PrintHand” into your Android Smartphone and follow manual user to setup, then you can send print jobs to your USB printer wirelessly in LAN.

For Printing via Bluetooth:

Bluetooth Print Server information: Name: Print server PIN Code: 0000

Step 1: Please pair your computer with Bluetooth Print Server firstly.

Step 2: Choose the corresponding COM Number for the target USB Printer in computer, then you can explore the printing via Bluetooth from Computer to the USB Printer.

Step 3: Download and install APP “PrinterShare” or “PrintHand” into your Android Smartphone firstly and make the Bluetooth Pairing for your Smartphone and Bluetooth Print Server, then you can send print jobs via Bluetooth from your Android smartphone to your USB printer.

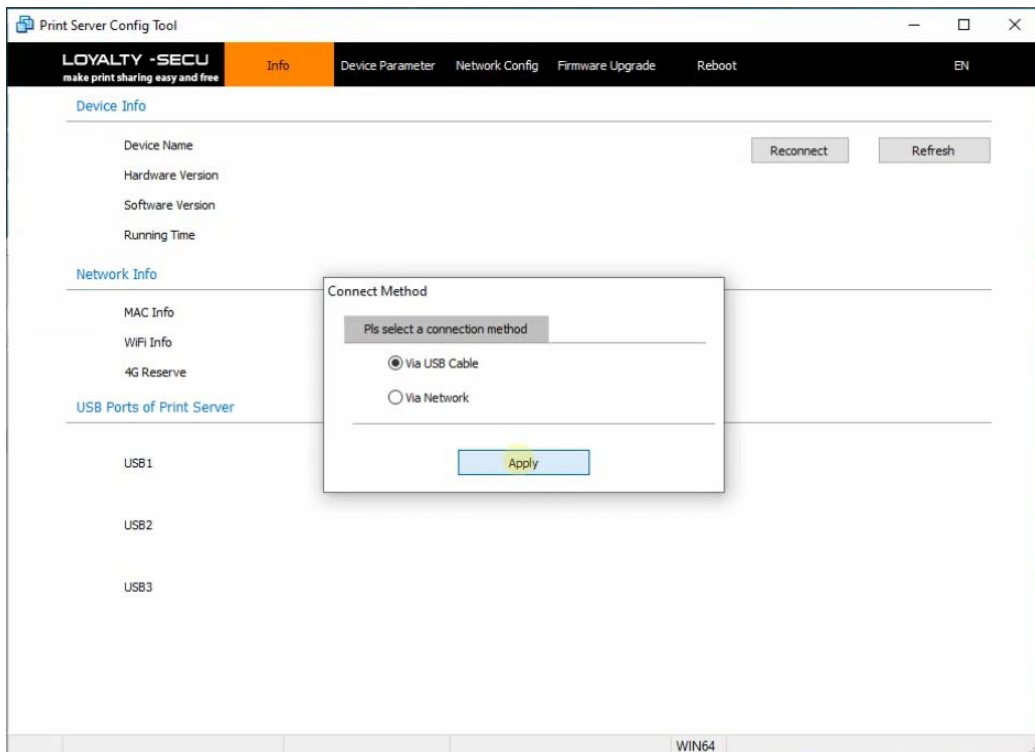
Note: Please follow our user manual to finish the above configuration.

Warm Reminder: Printing via Bluetooth Not support IOS System (iPhone, tablet), MAC OS System!!

**Product Specification:**

Model	LY-MPS-WB03
Product Item	3 USB Port WiFi Bluetooth Print Server
Support Printer Types	Inkjet Printers, Label Printer, Barcode Printer, Impact Printer (Dot Matrix Printing) ,Thermal Label or Receipt Printer, Laser Printer, Multifunction Printer(MFP),and so on
CPU	ARM9 32-bit
Memory	64MB DDR2
Flash	128MB NANDFLASH
Printer Connection	USB 2.0/USB 1.1
Product Size(L*W*H)	75*75*18mm
Product Weight	30g
Operating System	LINUX3.4
USB Interfaces	3PCS * USB2.0 Interfaces, support to work with 3 pcs printers simultaneously
Print Server Config Tool	Yes
USB Print Interface	USB2.0 Host
USB Config Interface	USB2.0 Device
Print & Scan Function	Support
Network Interface	10/100Mbps RJ45
TF Slot	Yes, Max support 256GB
WiFi Function	802.11BGN
Bluetooth Function	Classic 2.0+ BLE4.0
Network Protocols	IPX, TCP/IP, NETBUEI, APPLETALK, LPR, SMB (Over TCP/IP)
Working System	Windows 2000/2003/XP/Vista/7, 8.x and 10 ,MAC OS and Android operating system
Power Supply	5V/1A
Gift Box Size	13*13*5CM
Gift Box Weight	230g
Packing Items	1PCS * Print Server,1PCS * Power Adapter,1PCS * User Guide
Product Color	White , accept customization for product color
Operating Environment	Temp: -10°C~50°C , Humidity: 20%~85%
Charging Environment	Temp: 5°C~40°C , Humidity: 20%~85%
Storage Environment	Temp: -20°C~70°C, Humidity: 5%~95%

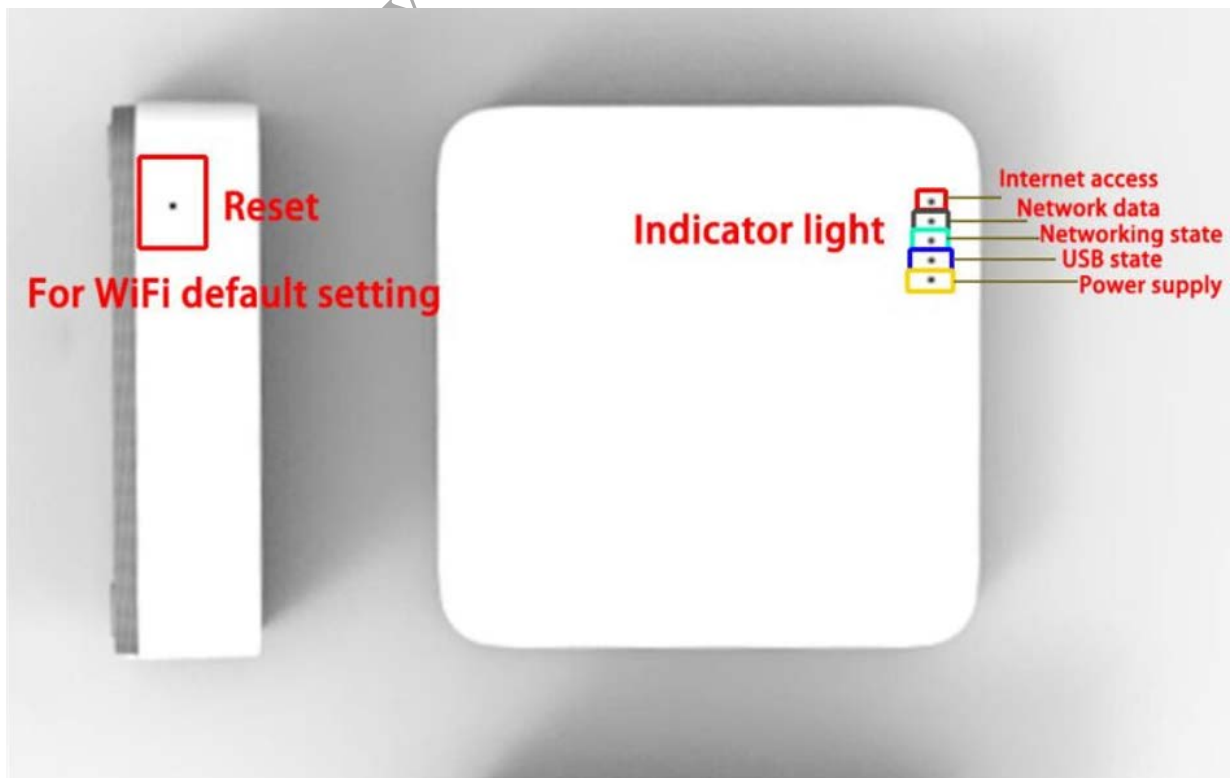
Upgraded & User-Friendly Config Tool:

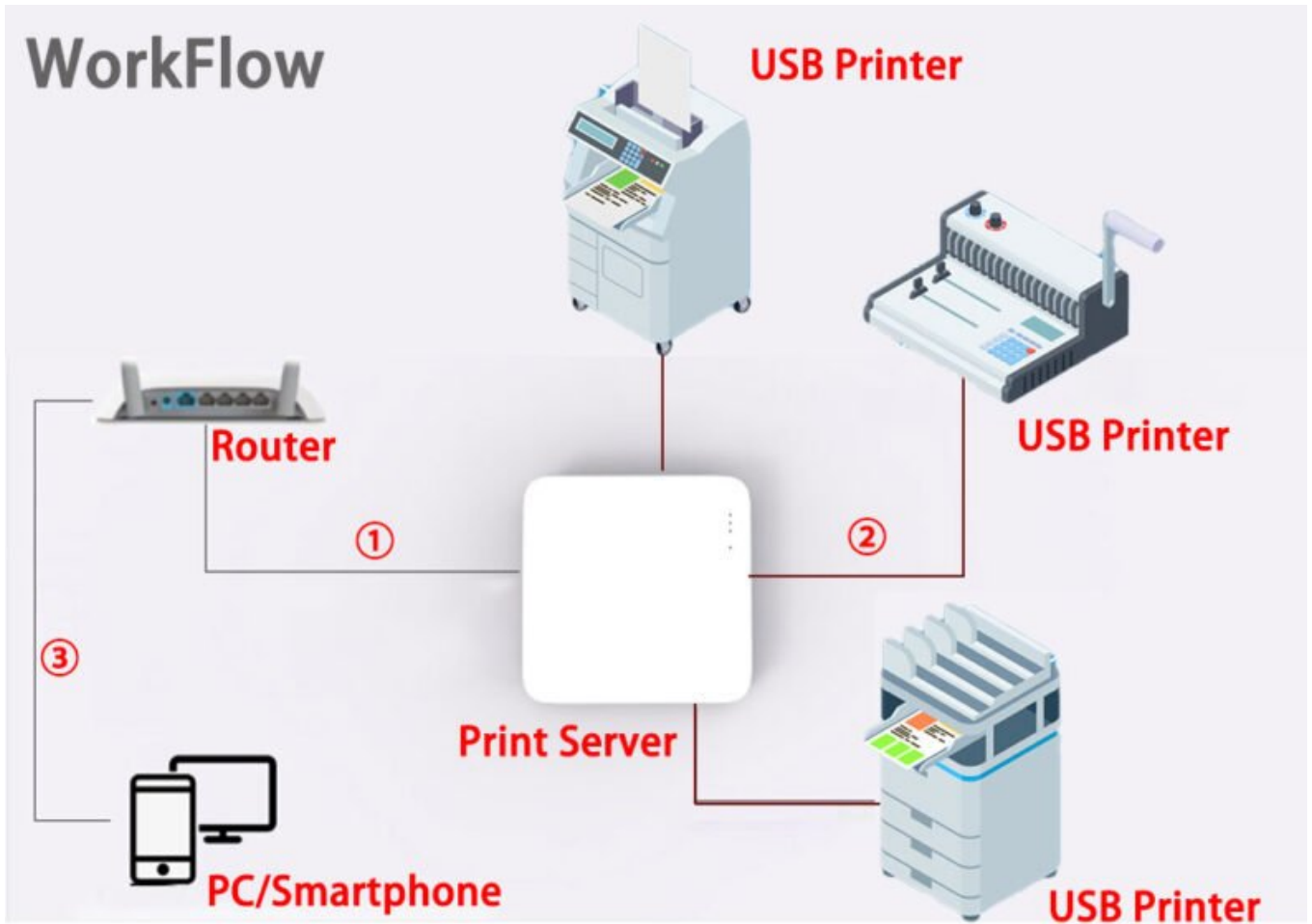


Product Configuration Demo Video Link:

WiFi: <https://www.youtube.com/watch?v=XwKtBOyxM-E&t=227s>

Bluetooth: https://www.youtube.com/watch?v=ECnf8Fcs_d8





①

If it's Network USB print server, please connect Router with print server via RJ45 cable;
If it's WIFI USB print server, it is ok to connect Router with print server via WiFi directly;
If it is Bluetooth Network USB print server, you prefer to Bluetooth printing,
It doesnt need to connect Router with print server.

②

3 USB ports USB print server supports 3 USB printer printing simetaneously, it just needs to connect USB printer with print server via USB cable directly.

③

It can be sent print job via your computer or smartphone to your USB printer in the same Network.