

Contents

1. Precautions.....	2
1.1. Purpose	2
1.2. Definition.....	2
2. Production Description	3
2.1. Print Server Appearance	3
2.2 Print Server Config Tool Main Interface	4
2.2.1. Definition.....	4
2.2.2. Interface Introduction	4
2.2.2.1. Info Interface	4
2.2.2.2. Device Parameter Interface.....	5
2.2.2.3. Network Config Interface	6
2.2.2.4. Firmware Upgrade Interface	6
2.2.2.5. Reboot Interface.....	7
3. Basic Configuration and Operation	7
3.1. Print Server Configuration Tool Preparation (for Windows OS Config only)	7
3.1.1. Print Server Configuration Tool Download.....	7
3.1.2. Print Server Configuration Tool Installation	7
3.2. Print Server Connection with Print Server Config Tool (for Windows OS Config only)	8
3.2.1. Connection Via USB Cable.....	8
3.2.1.1. Preparation Work before Connection Configuration	8
3.2.1.2. Connection Configuration Steps.....	9
3.2.1.2.1. Connect the print server to the computer via the USB cable	9
3.2.1.2.2. Confirm the Ethernet IP Address of the Print Server	9
3.2.1.2.3. Set the Ethernet IP Address of the Print Server	10
3.2.2. Connection via Network.....	13
3.2.2.1. Preparation Work before Connection Configuration	13
3.2.2.2. Connection Configuration Steps.....	13
3.2.2.2.1. Connect the Print Server to the Computer via Network.....	13
3.2.2.2.2. Set the Ethernet IP Address of the Print Server	14
3.3. How to Config Computer to Print?.....	15
3.3.1. Take Win 10 operating system for example	15
3.3.2. Take Mac operating system for example	20
3.4. How to Config Bluetooth Device to Print?	21
3.3.1. Bluetooth Printing via Windows OS	21
3.3.2. Bluetooth Printing via Android OS	24
3.5. How to Config WiFi Printing via Android OS Device?.....	26
4. FAQs	27
4.1. Check if the Print Server already Connected to the Ethernet Successfully or Not?.....	27
4.2. How to Check if Your USB Printer supports RAW Protocol or Not?	28
4.3. How to Confirm the Print Issue of Document Pending?	28
4.4. Why don't We Suggest Using DHCP to Obtain an IP Address?.....	29
4.5. Why can't the Print Server Config Tool Recognize Print Server via Windows OS?.....	29

4.6. Why the WiFi Print Server cannot be connected via Network Connection Method?.....	29
4.7. Check Whether Disabled the “Enable bidirectional support” Option or Not	30
4.8. Check Whether the Print Server Scanned the Complete WiFi Internet Name	31

1. Precautions

1.1. Purpose

The USB print server mainly provides network printing support for a USB printer. Any computers and Android mobile phones under the same Ethernet network can be connected to the print server through the network (Wired or Wireless connection) for printing.

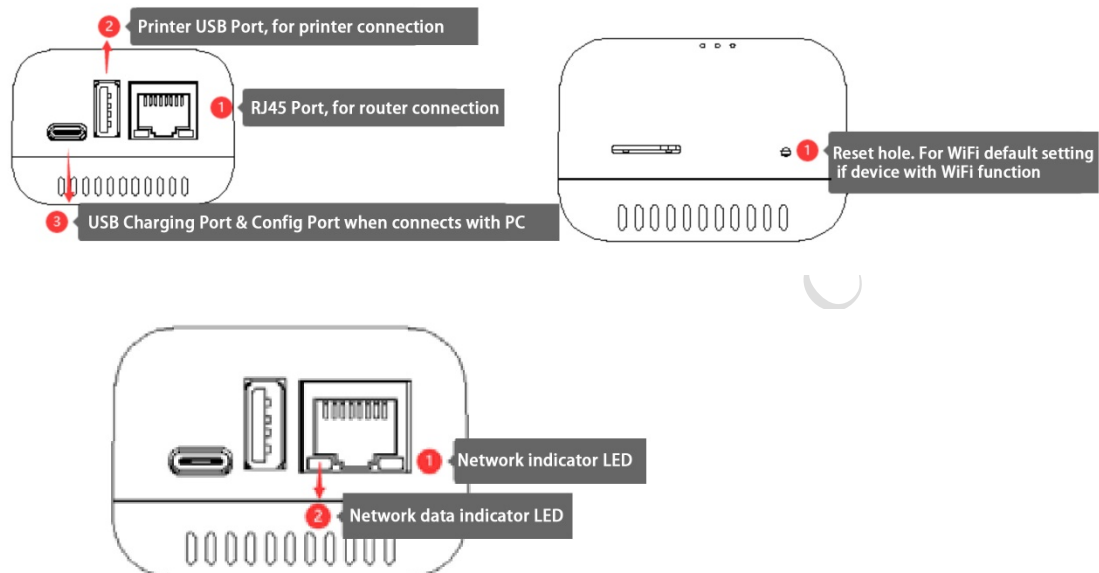
1.2. Definition

Definition	Description
USB Network Print Server	A print server that supports printing with USB printer via RJ45 Ethernet connection
USB Network WiFi Print Server	A print server that supports printing with a USB printer via RJ45 Ethernet connection or WiFi.
USB Network Bluetooth Print Server	A print server that supports printing with a USB printer via RJ45 Ethernet connection or Bluetooth.
1 USB Port Print Server	A device supports connecting 1 USB printer.
3 USB Ports Print Server	A device supports connecting 3 USB printers simultaneously.
Print Server Config Tool	A client that supports network connection configuration for print server, USB printer, computer, smartphone, and router.
Computer	Only Windows system Computer supports Print Server Config Tool; MAC OS and Windows Computer support printing job with the print server.
Smartphone	Only Android Smartphone supports printing job with the print server.
USB Printer	The print server only supports USB printers with the RAW protocol.
Network	Supports printing via a print server in the same WLAN.

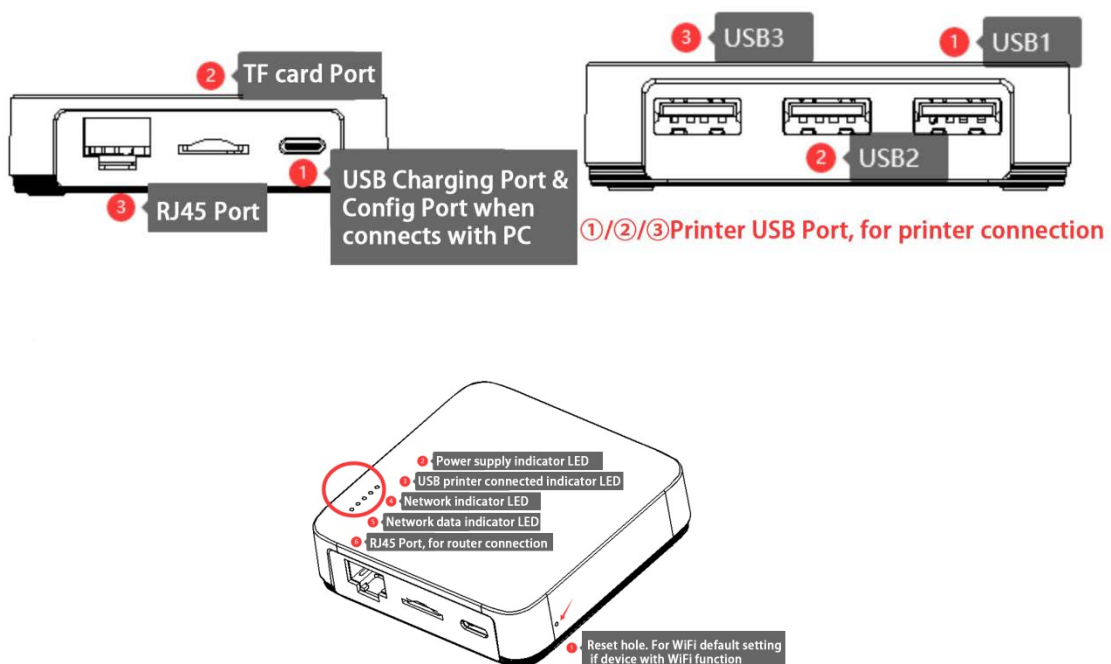
2. Production Description

2.1. Print Server Appearance

1 Port USB Print Server



3 USB Ports Print Server



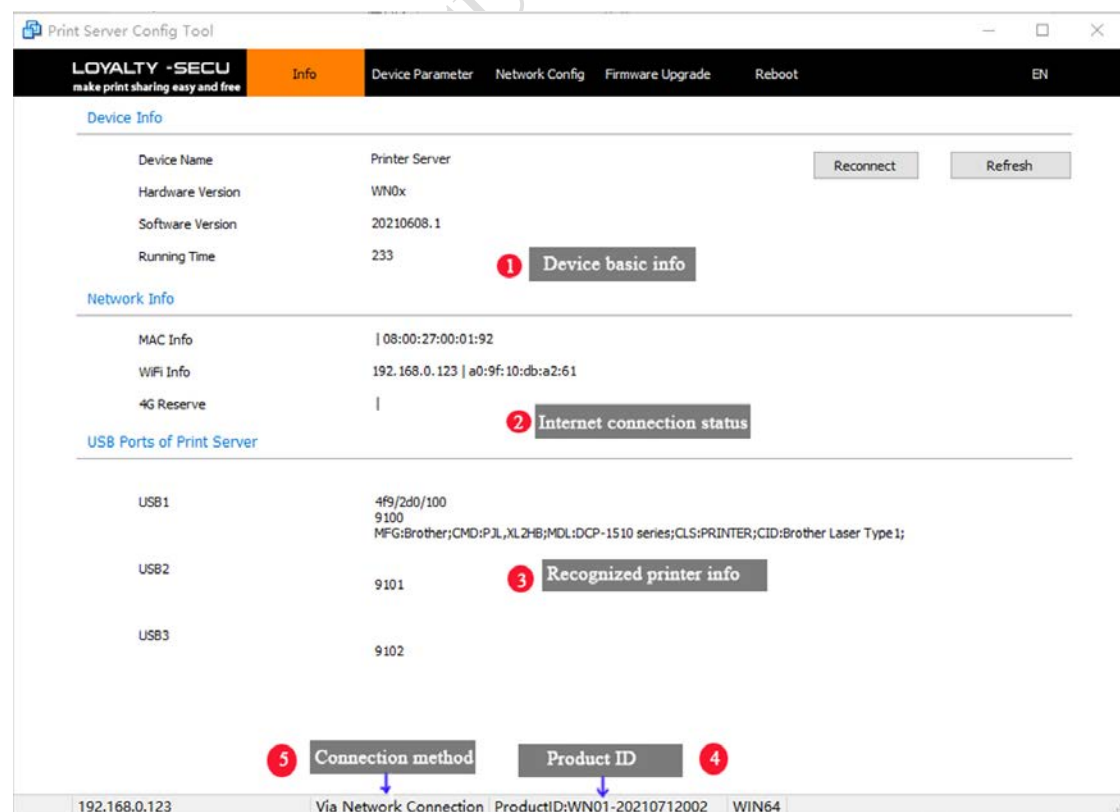
2.2 Print Server Config Tool Main Interface

2.2.1. Definition

Definition	Description
Info	Display print server basic information, such as device name, software version, etc
Device Parameter	Modify print server name, mac address, printing transmission mode
Network Config	Configure the IP address of print server via Wired or WiFi method
Firmware Upgrade	Upgrade the latest software of print server
Reboot	Reboot the print server, virtual USB port software for printer scan function

2.2.2. Interface Introduction

2.2.2.1. Info Interface



2.2.2.2. Device Parameter Interface

The screenshot displays the 'Print Server Config Tool' window with the 'Device Parameter' tab selected. The interface includes a top navigation bar with tabs for 'Info', 'Device Parameter', 'Network Config', 'Firmware Upgrade', and 'Reboot'. Below the navigation bar, the 'Device Config' section contains three rows of configuration options: 'Device Name' (set to 'Printer Server'), 'Printing Transmission Mode' (set to 'Starts to print while receiving file'), and 'MAC Addr' (set to '08:00:27:00:01:92'). Each row has a 'Save' button. A note below the MAC Addr field states: 'Unique MAC address is required, when there have multiple network print servers in the Ethernet'. The 'USB Port Config' section below contains three rows for 'USB Binding TCP/IP Port': 'USB1 Binding TCP/IP Port' (set to '9100'), 'USB2 Binding TCP/IP Port' (set to '9101'), and 'USB3 Binding TCP/IP Port' (set to '9102'). The 'USB1' row is highlighted with a red border. A 'Save' button is located to the right of the 'USB3' row. The bottom status bar shows the IP address '192.168.0.123', connection type 'Via Network Connection', product ID 'WN01-20210712002', and OS 'WIN64'.

Device Name: When there are multiple print servers in the network, it is recommended to modify the device name, so that the mobile phone can quickly connect to the assigned print server for printing.

Printing Transmission Mode: The default mode is "Starts to print while receiving file". For printer with higher data transmission, suggest choosing "Starts to print after received file"

MAC Add: Unique MAC address is required, when there have multiple network print servers in the Ethernet via network (RJ45 cable) connection

USB Port Config: For one port USB print server, please use the "USB1" port only, default port number: 9100. If users need to change this port number, please make sure the port number is as same as in the printer properties TCP/IP port. Port number range: 9100~65535.

2.2.2.3. Network Config Interface

Print Server Config Tool

LOYALTY -SECU
make print sharing easy and free

Info Device Parameter **Network Config** Firmware Upgrade Reboot

Wired/WiFi Network Config

Wired Network Config

Obtain an IP Address Fixed IP Address

IP Addr

Subnet Mask

Gateway 192.168.0.1

DNS Addr 192.168.0.1 Save

WiFi Network Config

Choose Available WiFi Internet Click "Scan" button to search WiFi internet Scan

WiFi Password

Obtain an IP Address Fixed IP Address

IP Addr 192.168.0.123

Subnet Mask 255.255.255.0

Gateway 192.168.0.1

DNS Addr 192.168.0.1 Save

192.168.0.123 Via Network Connection ProductID:WN01-20210712002 WIN64

Wired Network Config: The print server connects to the internet via RJ45 Cable

WiFi Network Config: The print server connects to the internet via a WiFi hotspot

Note: It is not recommended to use automatic IP address acquisition for the print server. After connecting with the configuration tool, it is recommended to change the IP address to a fixed IP address or set it to static allocation in the router.

2.2.2.4. Firmware Upgrade Interface

Print Server Config Tool

LOYALTY -SECU
make print sharing easy and free

Info Device Parameter Network Config **Firmware Upgrade** Reboot

Device Firmware Upgrade

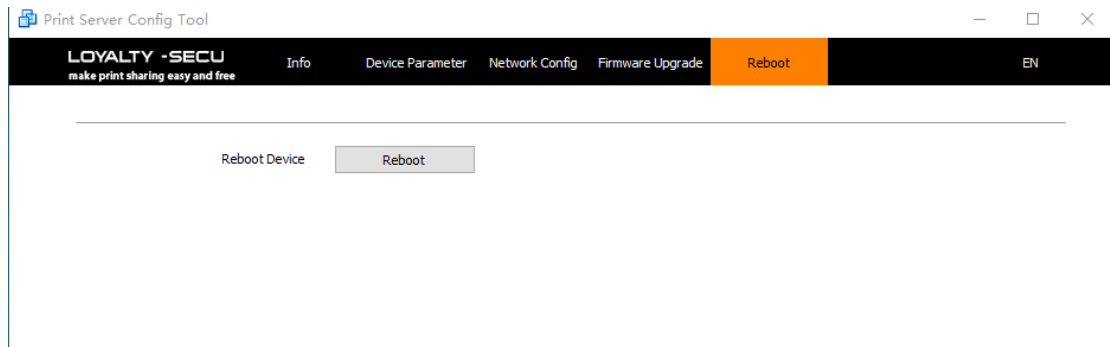
Please choose the firmware

Upgrade

192.168.0.123 Via Network Connection ProductID:WN01-20210712002 WIN64

Please choose the latest firmware to upgrade the print server, then click the "Upgrade" button, After finishing the update, need to reboot the print server.

2.2.2.5. Reboot Interface



Reboot is for rebooting the print server

3. Basic Configuration and Operation

Note: It only supports config the print server with print server config tool via Windows operating system computer. Mac operating system computer does not support.

After configuration successfully via windows operating system computer, you can use Windows and Mac operating system computers to explore printing via our print server directly.

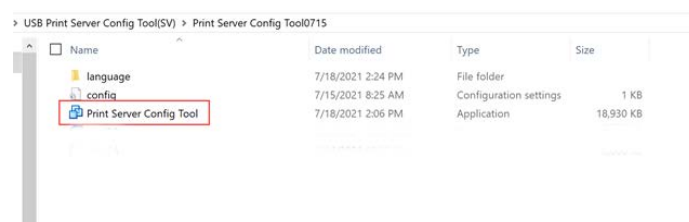
3.1. Print Server Configuration Tool Preparation (for Windows OS Config only)

3.1.1. Print Server Configuration Tool Download

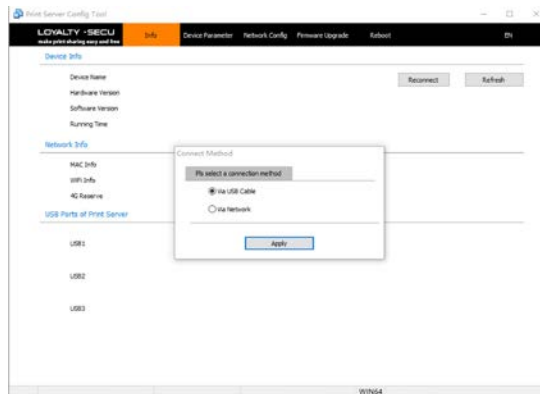
Please download the **Configuration Tool** from LOYALTY-SECU's official website: <https://loyalty-secutech.com/print-server-data-download/> or contact our customer service to obtain the configuration tool of the print server. Contact email: info@loyalty-secu.com

3.1.2. Print Server Configuration Tool Installation

The package of print server config tool is shown as below:



double-click [Print Server Config Tool] to configure the parameters, it is no need for any software installation process. the interface as shown as below:



Note: After running the configuration tool, the Windows PC may remind you whether to allow access to the network. If you use network configuration, you must allow access to the network so that the configuration tool can obtain the list of print servers in the network.

3.2. Print Server Connection with Print Server Config Tool (for Windows OS Config only)

3.2.1. Connection Via USB Cable

3.2.1.1. Preparation Work before Connection Configuration

- ✓ A computer with Windows operating system
- ✓ A USB cable with TYPE C interface (Included in the packing box)
- ✓ Print Server Config Tool (Windows version)

3.2.1.2. Connection Configuration Steps

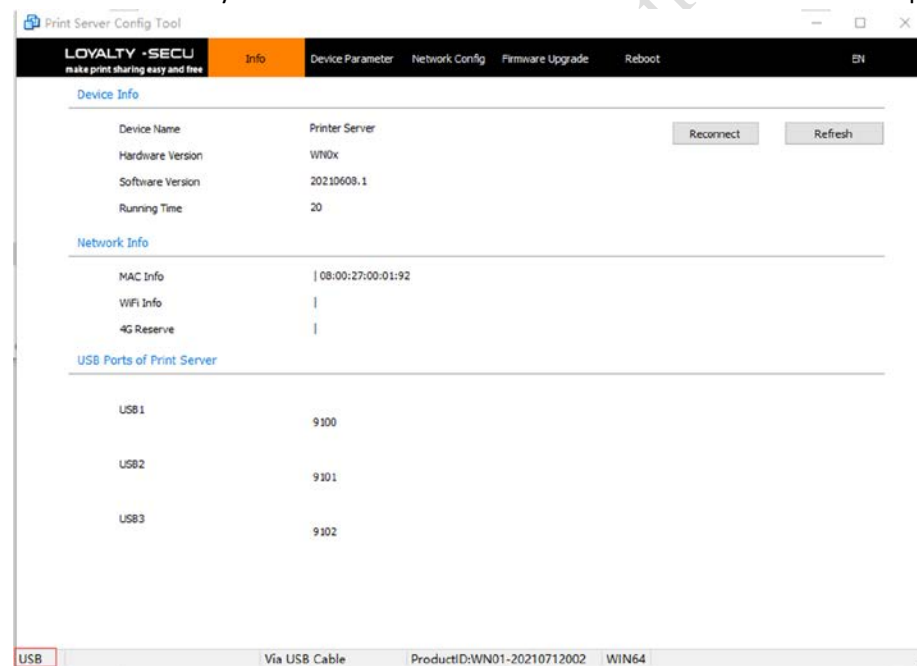
3.2.1.2.1. Connect the print server to the computer via the USB cable



As shown as right:

After being connected to the computer, the print server will automatically power on and start. and the print server config tool will display the “USB” sign in the lower-left corner, indicating that the config tool has been identified as the print server as shown as below:

Note: Please kindly note it will take about 20 seconds to finish the entire startup process.



3.2.1.2.2. Confirm the Ethernet IP Address of the Print Server

2 ways for the print server to obtain the IP Address:

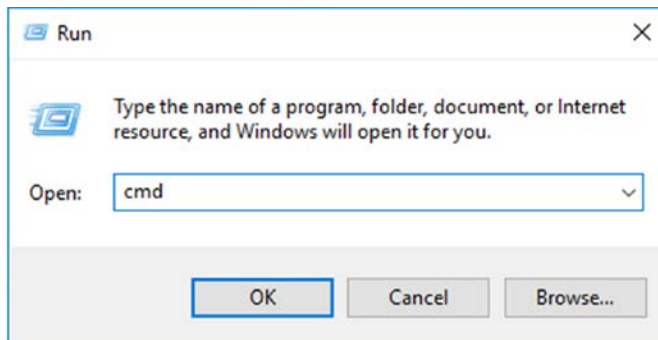
Way 1: Use DHCP to obtain an IP address from the network

It will assign the print server a dynamic IP address when connecting the print server with the router,

please kindly make sure your router supports the DHCP function.

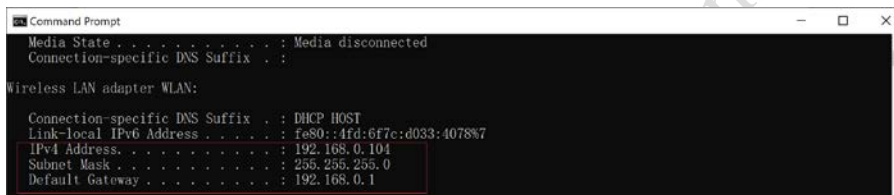
Way 2: Obtain a fixed IP Address

Click "Start Menu---Run" or use the "WIN+R" key combination to call the run window, enter "cmd" in the Run window, click OK as shown as below:



After inputting "ipconfig", click the "Enter" button, then the IP Address, Subnet Mask, Gateway information will be displayed as shown as below:

- 1) Network Segment: 192.168.0.xxx
- 2) Subnet Mask: 255.255.255.0
- 3) Default Gateway: 192.168.0.1



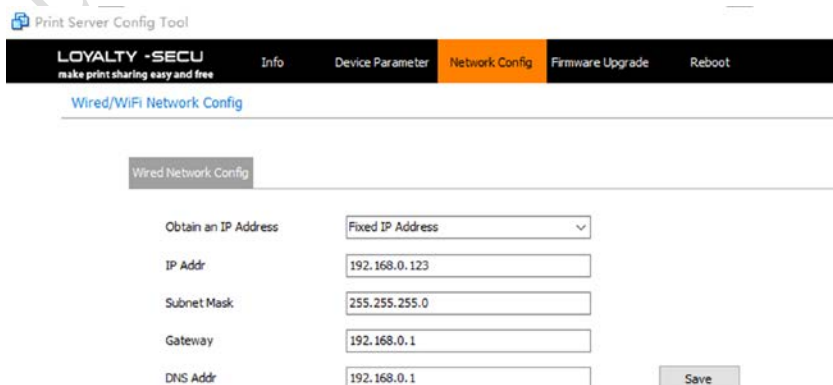
3.2.1.2.3. Set the Ethernet IP Address of the Print Server

2 ways to set network configuration: (wired network config or WiFi network config)

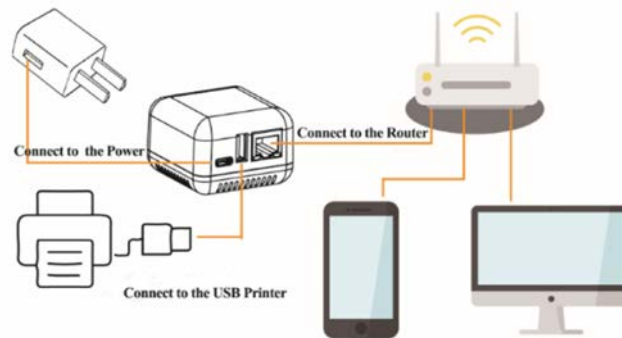
Way 1: Wired Network Config (for network print server)

Input the below parameters in the Wired Network Config, then click the "Save" button as shown as below:

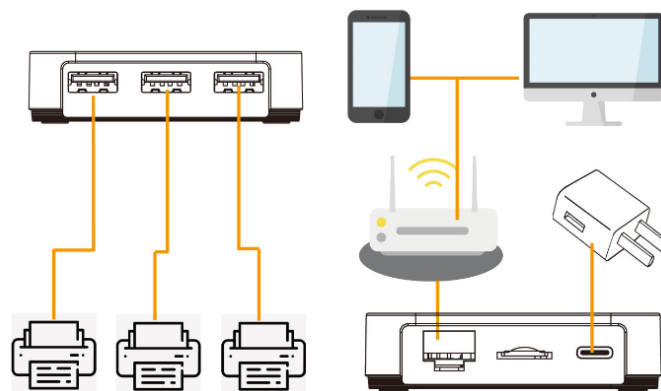
- Eg: 1) IP Address: 192.168.0.123(Fixed)
- 2) Subnet Mask: 255.255.255.0 (For demo using only)
- 3) Gateway & DNS: 192.168.0.1



After configuring the corresponding parameters, remove the USB cable from the computer. And connect relevant devices as shown as below:



(1 USB Port Network Print Server)



(3 USB Ports Network Print Server)

Way 2: WiFi Network Config (for WiFi print server)

Click the "Network Config" interface, configure the parameter via "WiFi Network Config" as shown as below:

Print Server Config Tool

LOYALTY -SECU make print sharing easy and free

Info Device Parameter **Network Config** Firmware Upgrade Reboot EN

Wired/WiFi Network Config

Wired Network Config

Obtain an IP Address Obtain an IP Addr via DHCP

IP Addr

Subnet Mask

Gateway

DNS Addr Save

WiFi Network Config

Choose Available WiFi Internet Click "Scan" button to search WiFi internet Scan

WiFi Password

Obtain an IP Address Fixed IP Address

IP Addr

Subnet Mask

Gateway

DNS Addr Save

USB Via USB Cable ProductID:WN01-20210712002 WIN64

Click "Scan" to search nearby WiFi hotspots, the result will be displayed in the drop-down list within 5 seconds, select the right WiFi hotspot you need to connect, input the parameter, then

click "Save", as shown as below:

Eg: 1) IP Address: 192.168.0.123(Fixed)

2) Subnet Mask: 255.255.255.0

(For demo using only)

3) Gateway & DNS: 192.168.0.1

WiFi Network Config

Choose Available WiFi Internet: simplyisbest

WiFi Password: Rj4781956

Obtain an IP Address: Fixed IP Address

IP Addr: 192.168.0.123

Subnet Mask: 255.255.255.0

Gateway: 192.168.0.1

DNS Addr: 192.168.0.1

Scan

Save

1. Click "Scan" to search the WiFi internet nearby, and choose the right one

2. Input WiFi password

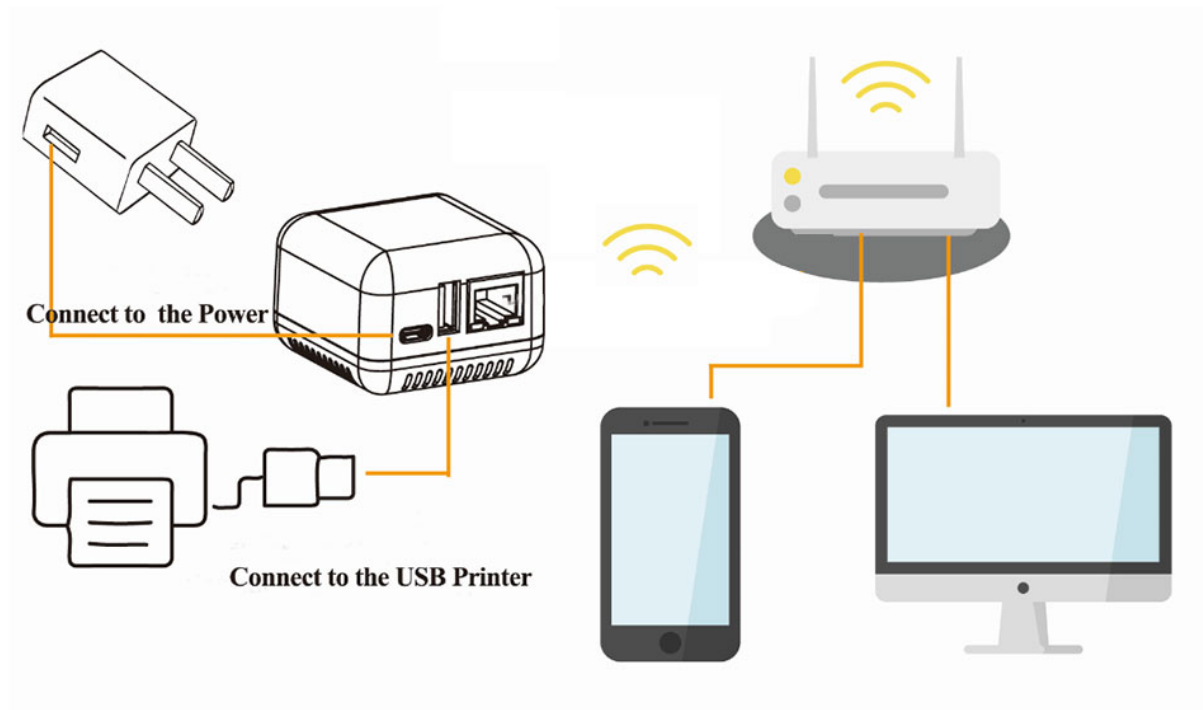
3. Assign an fixed IP address, fill in all the info

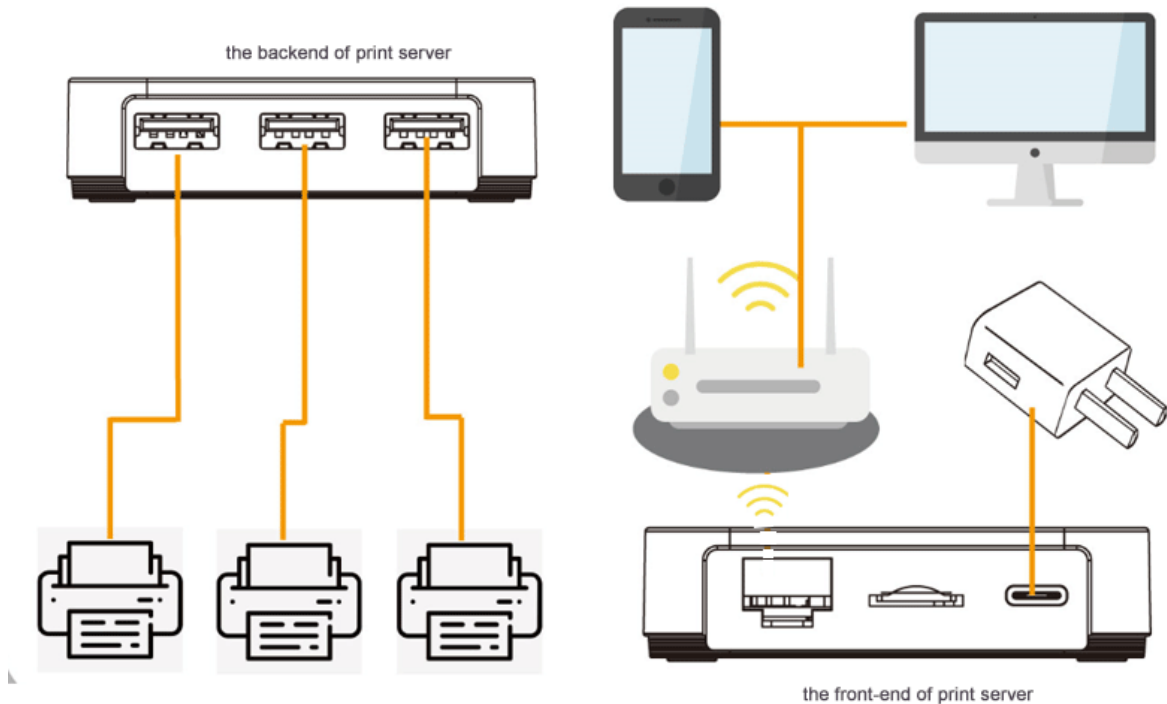
4. Click "Save" button

USB Via USB Cable ProductID:WN01-20210712002 WIN64

The parameter configuration procedure of Ethernet IP Address is as same as [3.2.1.2.2. part](#), so do not repeat here.

After finishing the WiFi network config, remove the USB cable from the computer. And connect relevant devices as shown as below:





(3 USB Ports WiFi Print Server)

3.2.2. Connection via Network

3.2.2.1. Preparation Work before Connection Configuration

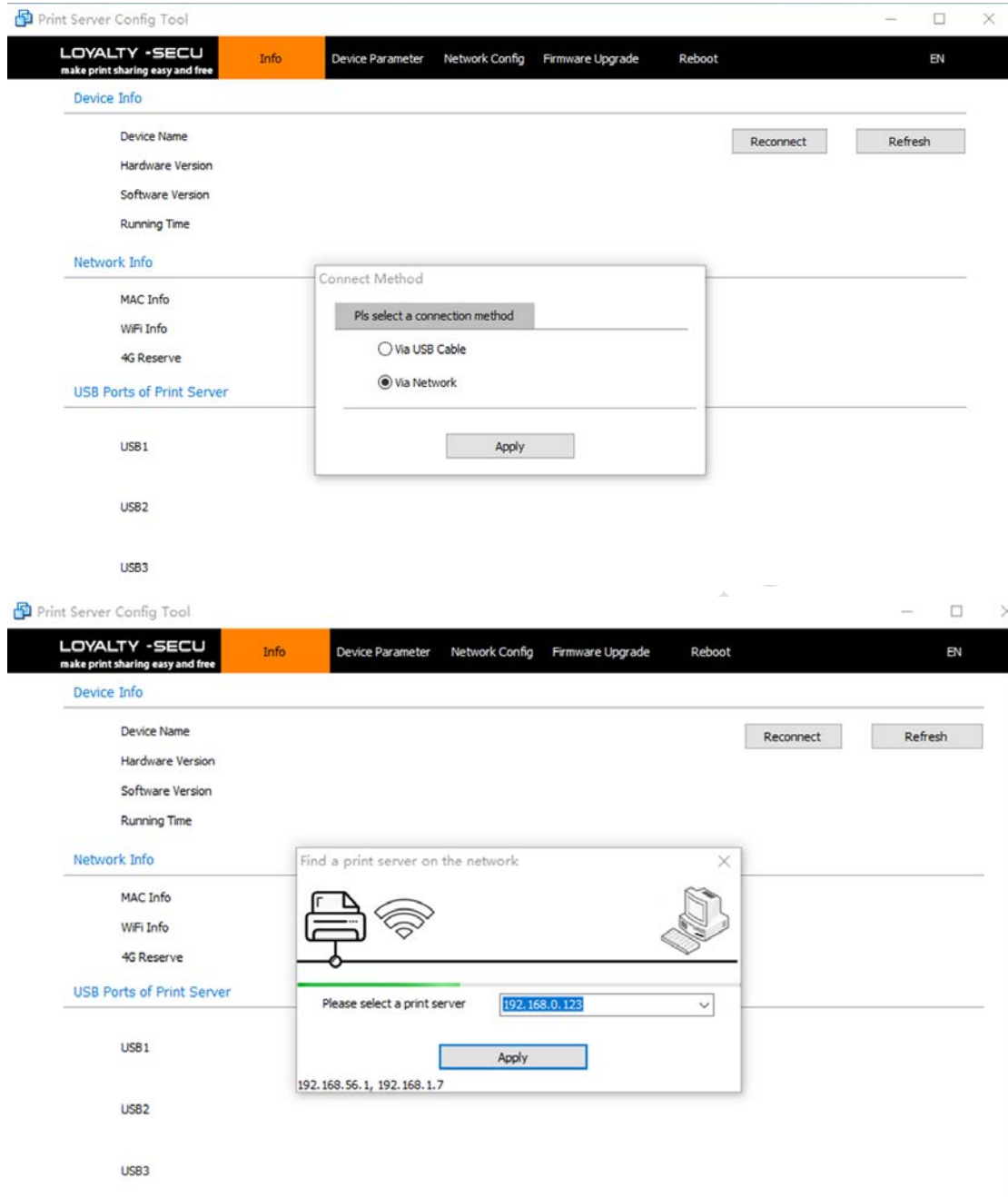
- ✓ A computer with Windows operating system
- ✓ Power on the print server, and connect it to the router via network cable
- ✓ Print Server Config Tool (Windows version)

3.2.2.2. Connection Configuration Steps

3.2.2.2.1. Connect the Print Server to the Computer via Network

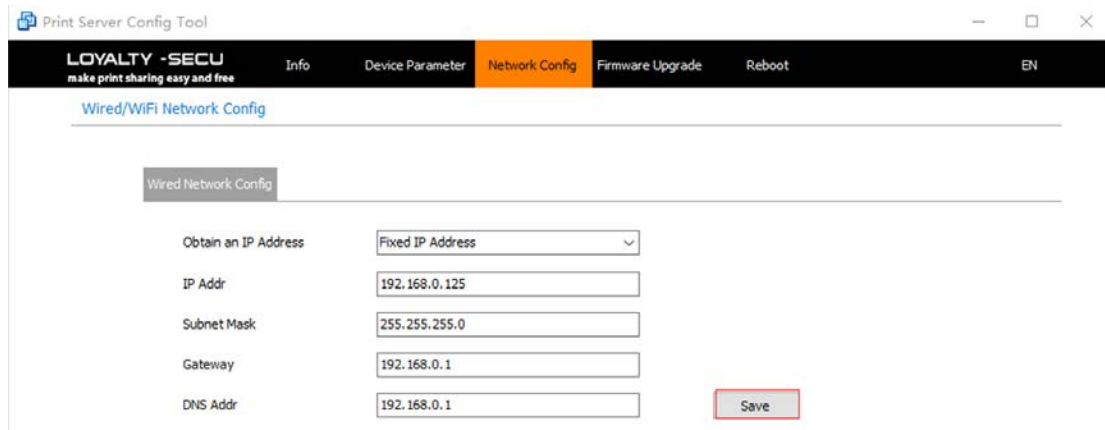
Open the config tool, choose the "Via Network" method, and select the IP address of the print server from the Ethernet, as shown as below:

Note: The print server with an operating system inside and it takes about 20 seconds to start up after powering on.



3.2.2.2.2. Set the Ethernet IP Address of the Print Server

The parameter configuration procedure is as same as [3.2.1.2.2. part](#), so do not repeat here. After finished configuration, please click “Save” as shown as below:

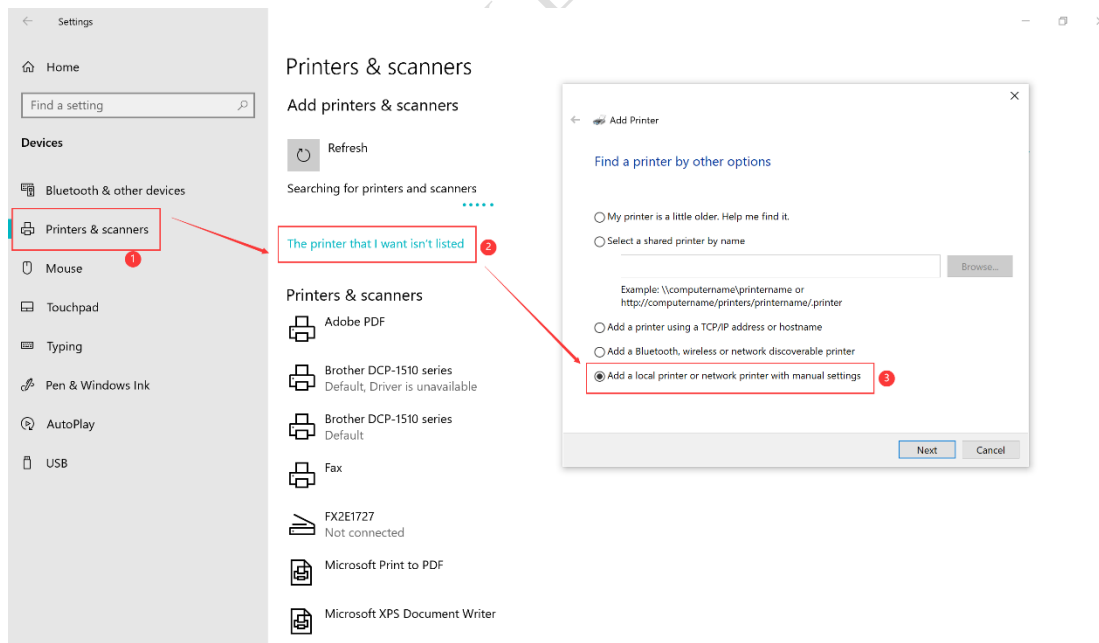


3.3. How to Config Computer to Print?

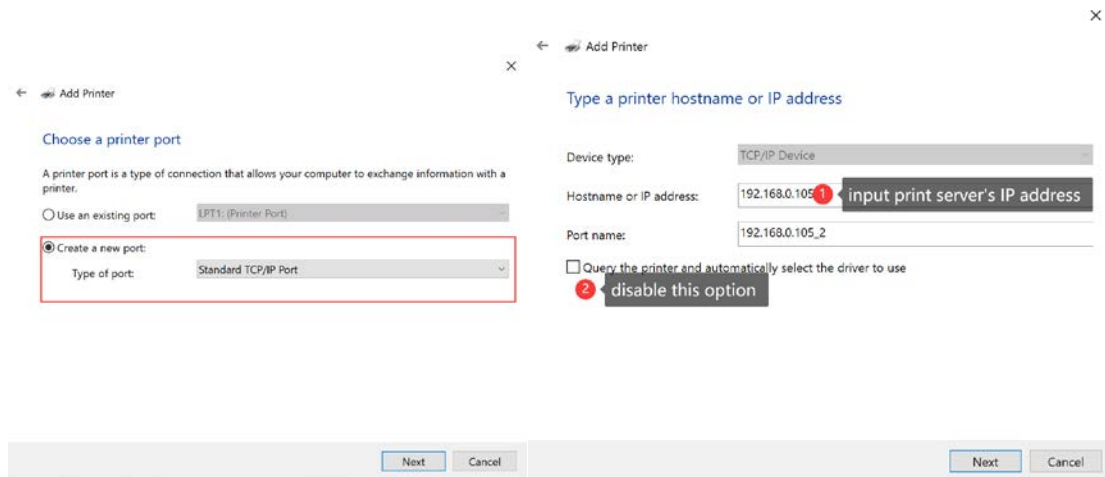
3.3.1. Take Win 10 operating system for example

Note: After finishing the configuration between the print server and the print server config tool, it needs to add a printer to the computer for printing.

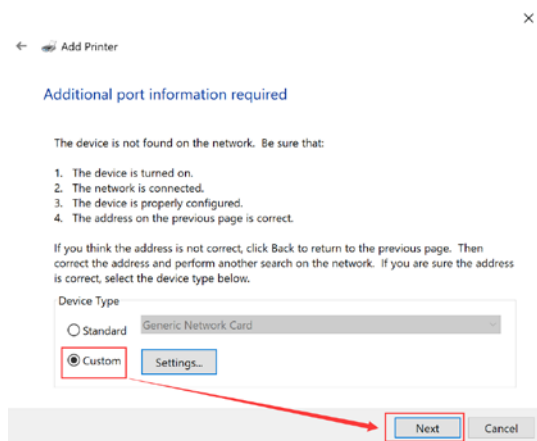
Click the “Start” menu → Choose “Setting” → choose “Devices” → choose “Printer & Scanner” → Choose “add a printer & scanner”, if you didn’t find your printer in the list, click “The printer that I want isn’t listed” and choose option ③ as shown as below:



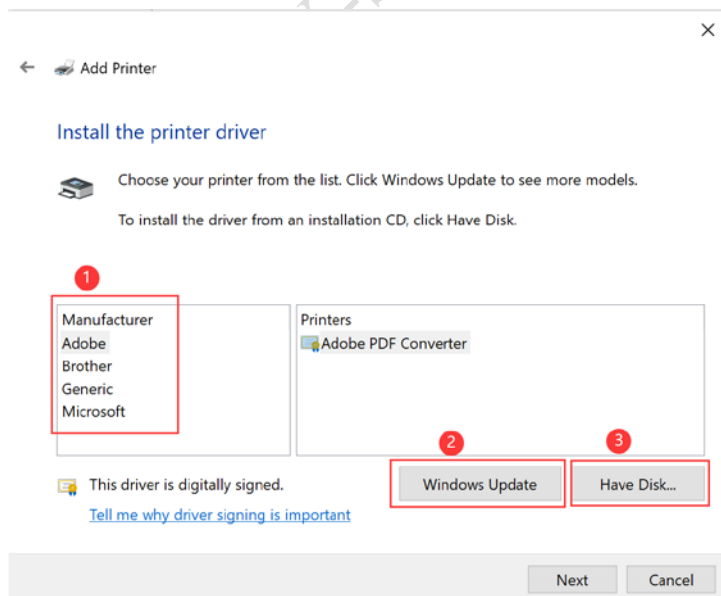
“Create a new port”, and the “type of port” is “Standard TCP/IP Port”, Click the” Next” button as shown as:



Click the “next” button to continue and show the setting interface as shown as below:
And choose “Custom” and click “next” to continue the next step:

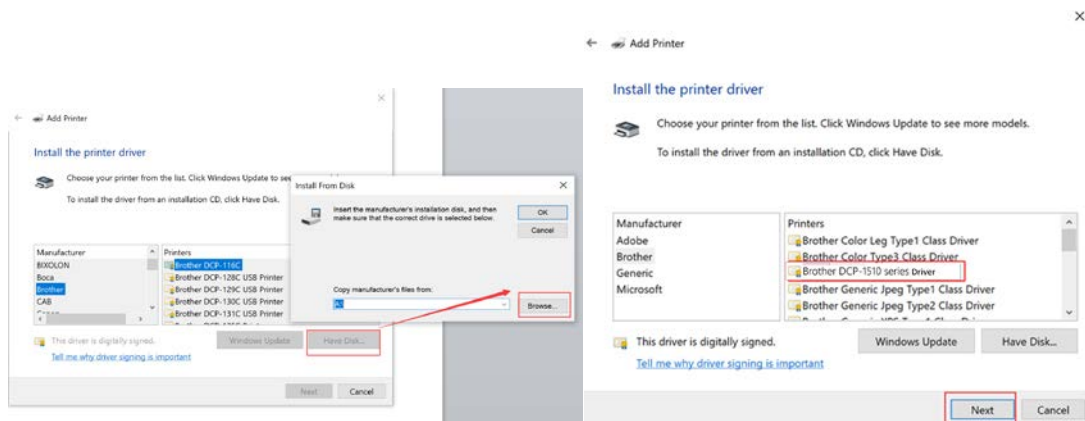


If there is not your brand Model NO. printer driver in list ①, it can obtain from option ② and ③ as shown as below:



After clicking “Windows Update”, It can obtain a printer driver brand list as shown as follows:
If there still haven’t your brand model NO. printer driver, pls click “Have Disk ” and copy your USB

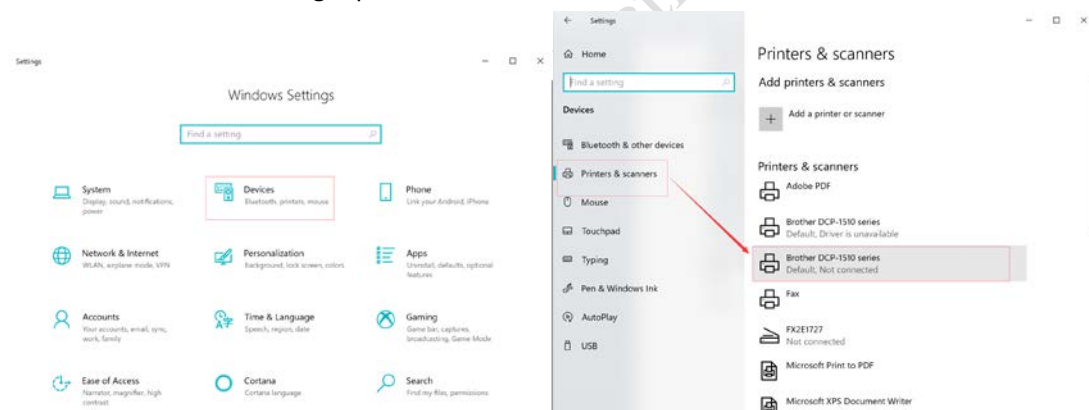
printer manufacturer's printer driver from your disk to install the driver into the computer.
As shown as below:



Note: If you still cannot obtain the printer driver from “Windows Update” or “Have Disk”, please connect your USB printer with the computer, it will install the printer driver into the computer directly. Or contact your USB printer supplier to obtain a printer driver.

And click” **next**” after finishing the installation.

Then click the “**Start**” menu→Choose “**Setting**” →choose “**Devices**” →choose “**Printer & Scanner**” →Choose the target printer as shown as below:

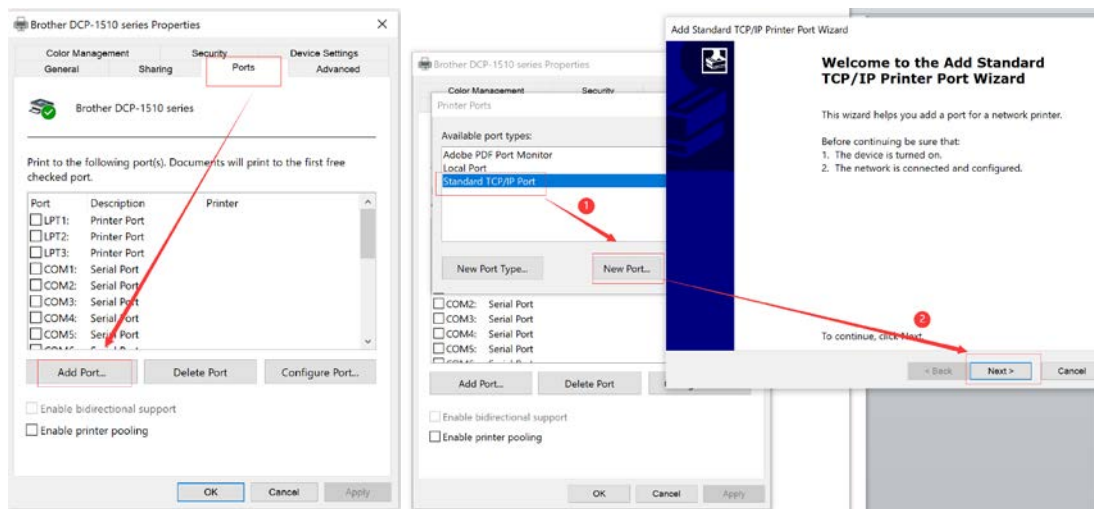


Right-click the “**Brother DCP-1510 series**” printer and choose “**Printer Properties**”, as shown as below:

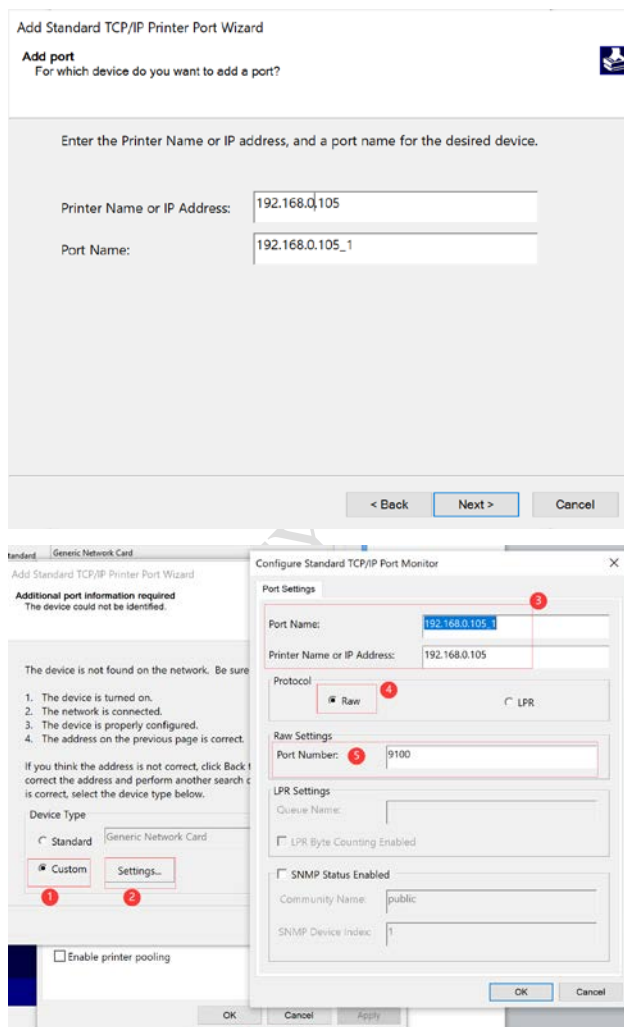


Choose “**Ports**”-> Click “**Add Port**”, Choose “**Standard TCP/IP Port**” and click “**New Port**” and

“next” as shown as below:



Input the IP address of the Print Server, choose “Custom”, click “setting” as shown as below:



Please make sure **IP address**③ and **Port Number**⑤ are as same as print servers, and **Protocol**④ is Raw. You can check the “Info” interface of the print server in the print server config tool to double-check.

Note: If it is 3 USB Ports Print Server, please kindly note that the **Port Number**⑤ is different

from per USB port.

After the above “Port Settings” is finished, please click “OK” to continue. And click “Next” as shown as below:

Add Standard TCP/IP Printer Port Wizard

Additional port information required
The device could not be identified.



The device is not found on the network. Be sure that:

1. The device is turned on.
2. The network is connected.
3. The device is properly configured.
4. The address on the previous page is correct.

If you think the address is not correct, click Back to return to the previous page. Then correct the address and perform another search on the network. If you are sure the address is correct, select the device type below.

Device Type


☐ Standard Generic Network Card

☒ Custom

< Back **Next >** Cancel

After finishing adding the TCP/IP Port, the printer IP Address and port number will be displayed as shown as follows:

Add Standard TCP/IP Printer Port Wizard



Completing the Add Standard TCP/IP Printer Port Wizard

You have selected a port with the following characteristics.

SNMP:	No
Protocol:	RAW, Port 9100
Device:	192.168.0.105
Port Name:	192.168.0.105_1
Adapter Type:	

To complete this wizard, click Finish.

< Back **Finish** Cancel

Now all settings are completed, we can start to “**print a test page**” to test if the setting is

successful or not, as shown as below:



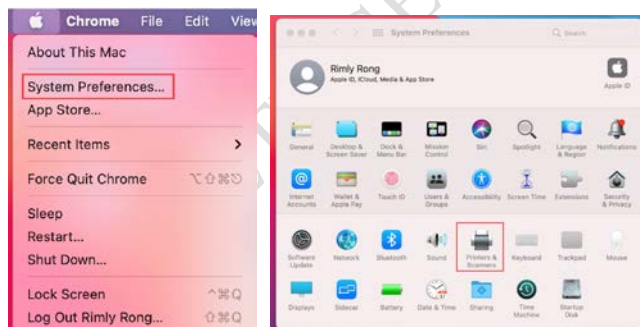
3.3.2. Take Mac operating system for example

Before proceeding on the setting, please notice the below items in advance:

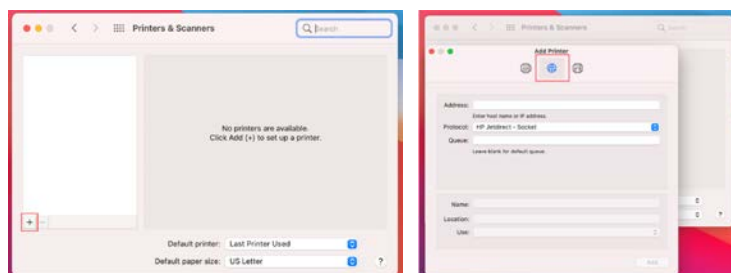
- ✓ Make sure the MAC computer can print directly when connected to the USB printer.
- ✓ MAC System can recognize the USB printer with 9100 Port only and is unable to recognize the printers with 9101/9102/9103 Port.
- ✓ MAC System supports most of the brand printers such as HP, Brother, Samsung; Supports a few limited models for Canon and Epson.
- ✓ MAC System support to print via HP Jetdirect-Socket Protocol, not support the IPP, LPD Protocol

Steps for MAC system to add the printer:

Choose the “**System Preferences**”, and choose the “**Printers & Scanners**” as shown as below:



Click “+”, to add the Printer. And Choose the “**IP**” Option, to fill in the printer information as shown as below:



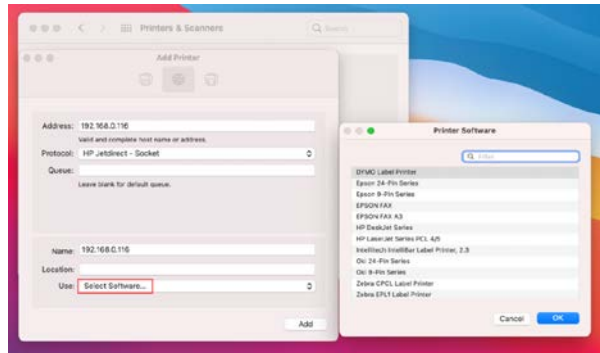
Note:

Address: Input IP Address or Host Name (the print server IP address)

Protocol: HP Jetdirect-Socket (HP and other printer manufacturers are using this protocol)

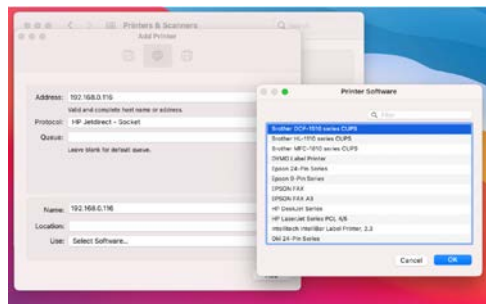
Use: Select Software

For other items just keep the default options as shown as below:

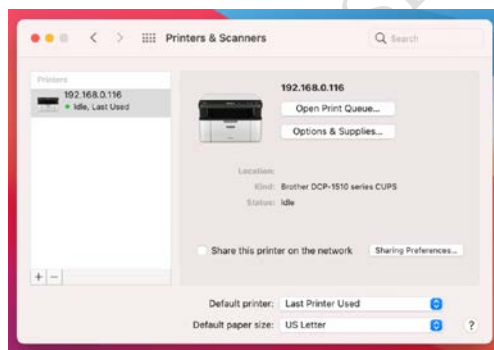


Choose the right printer software from the listing.

You can use the “Filter” function for a quick search. If you cannot find your printer software from the existing listing, please go to the printer’s website to download the MAC driver. After finding your printer software, please click “OK”



After finishing the printer software installation, you can explore the printing now.



3.4. How to Config Bluetooth Device to Print?

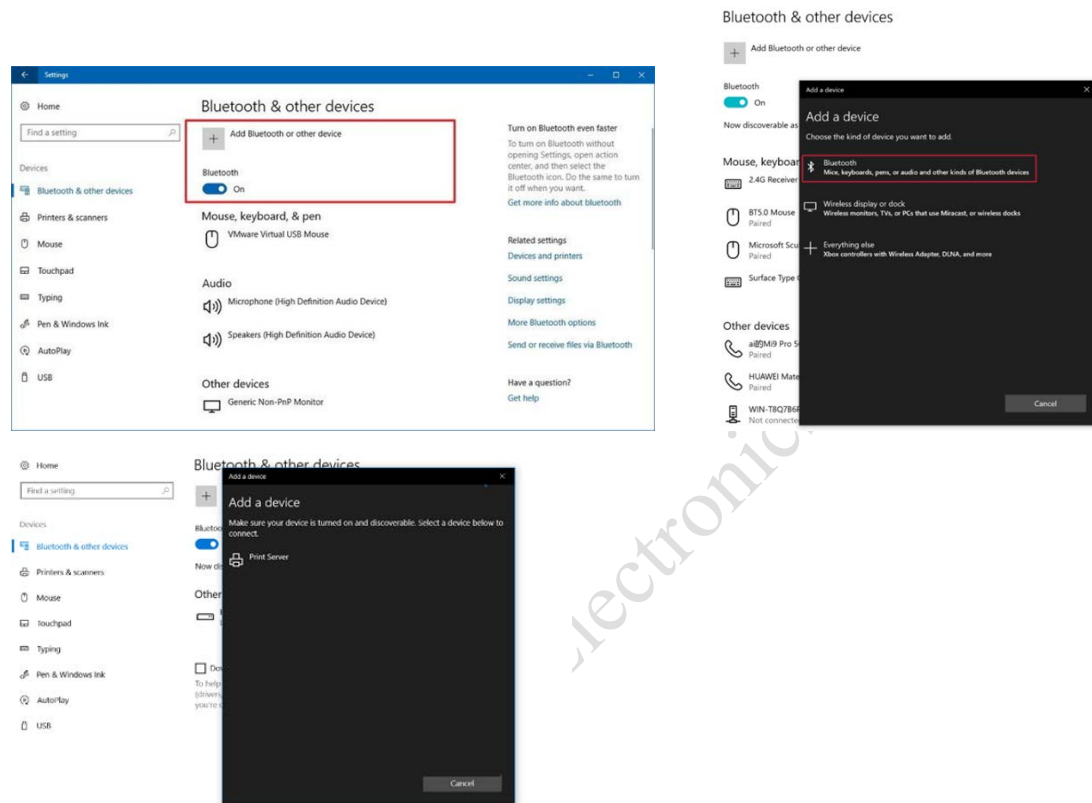
Note: It only supports Windows OS and Android OS printing via Bluetooth function

3.3.1. Bluetooth Printing via Windows OS

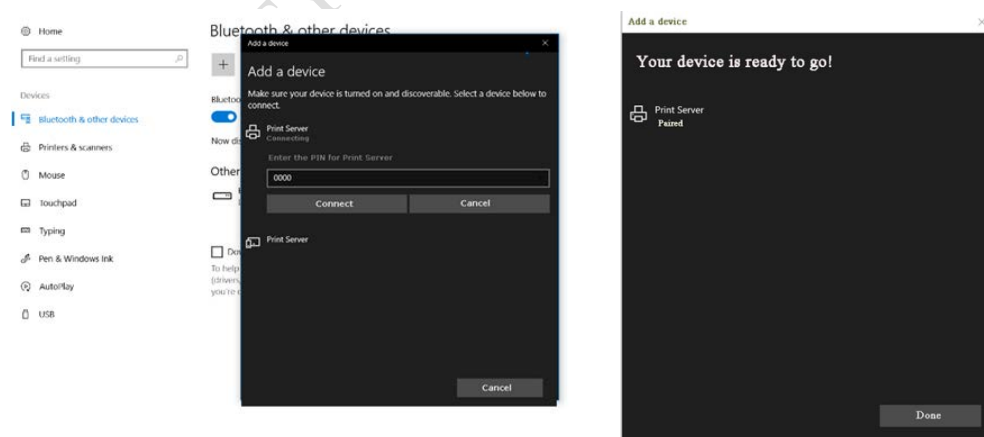
How to connect a print server to a computer using Bluetooth

- 1) Open Settings.
- 2) Click on Devices.
- 3) Click on Bluetooth & other devices.
- 4) Turn on the Bluetooth toggle switch.
- 5) Click the Add Bluetooth or other device button to connect to the print server.

As shown as below:



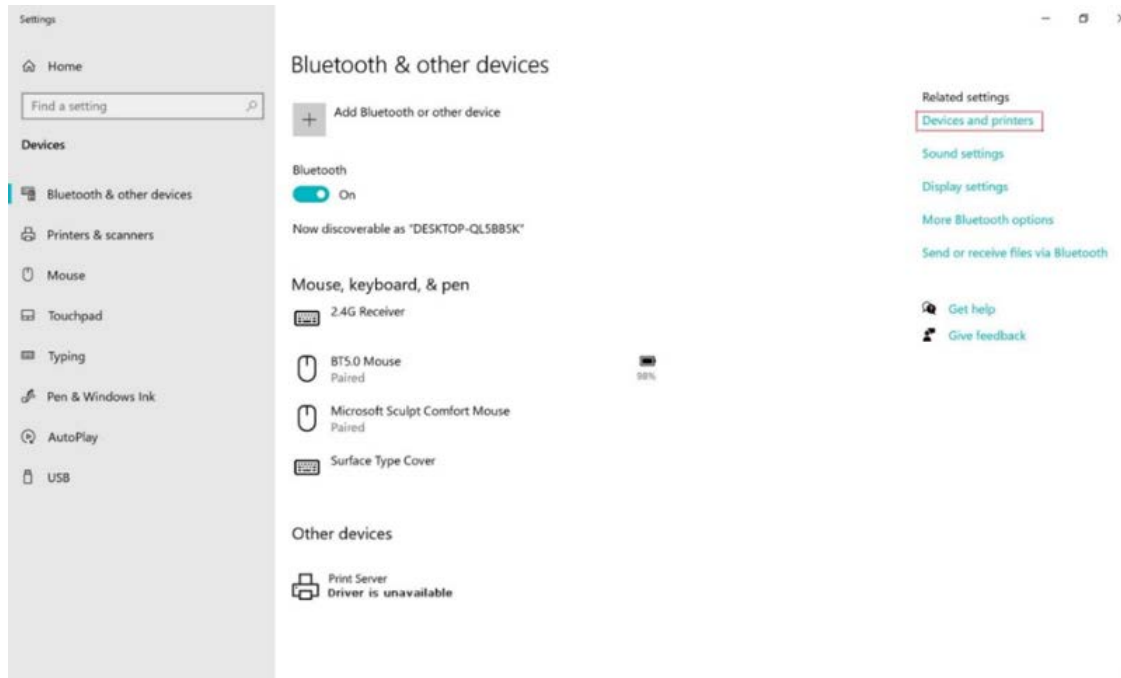
Note: Bluetooth Device Name: Print Server PIN Code: 0000



Get the Bluetooth Networking COM Number of the Print Server

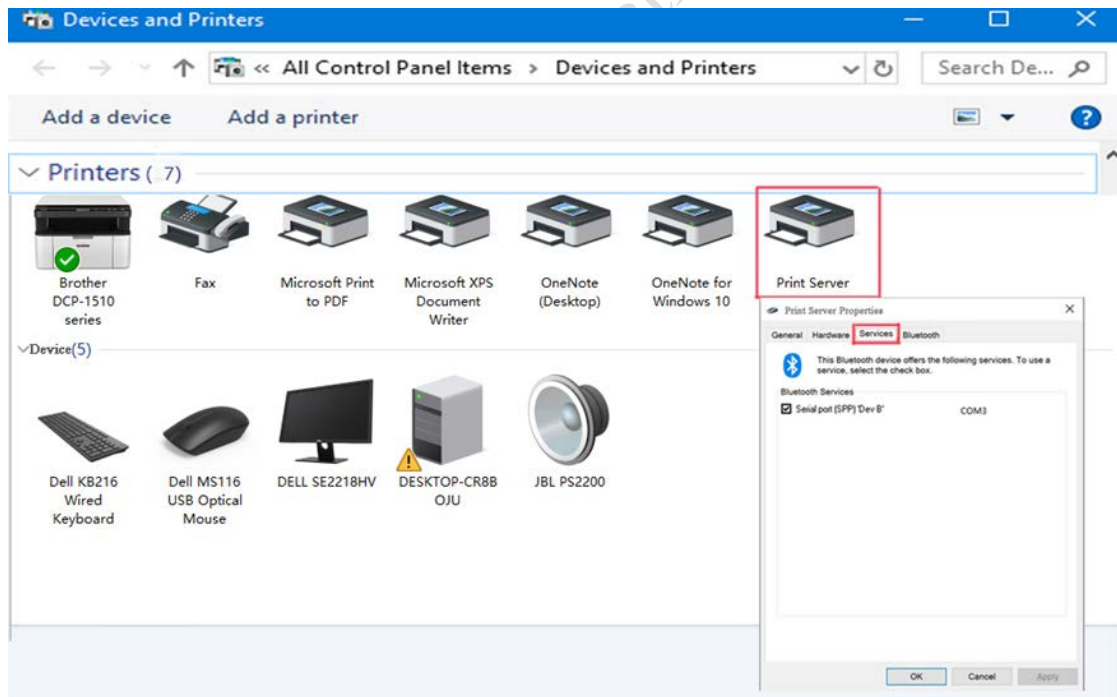
After the computer is paired with the Print Server, the Print Server has already been listed in the Other Devices area, as shown below:

Click the "Devices and Printers", to get the Bluetooth Networking COM Number.



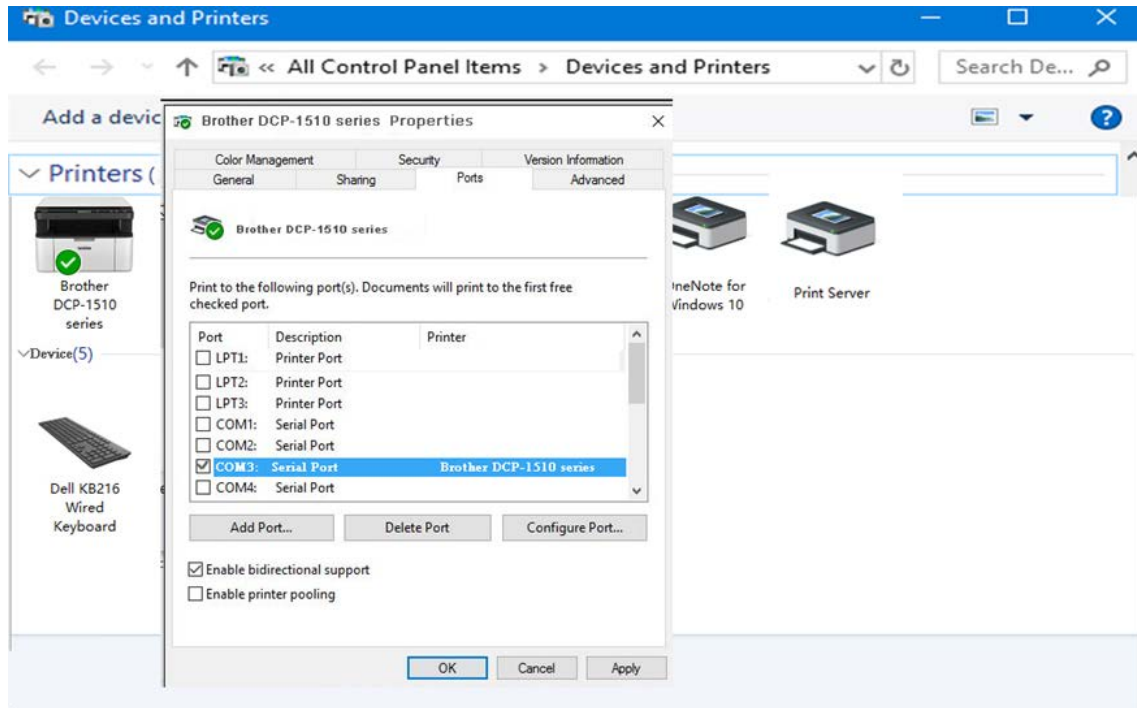
Right-Click the "Print Server"-> "Print Server Properties" ----> Choose "Service"
To get the Print Server Bluetooth SPP Port Number, as shown as below:

SPP: COM3



Choose the corresponding COM Number for the Printer

Choose "Brother DCP-1510 Series"-> "Printer Properties"-> Choose Port "COM3"->click "OK"

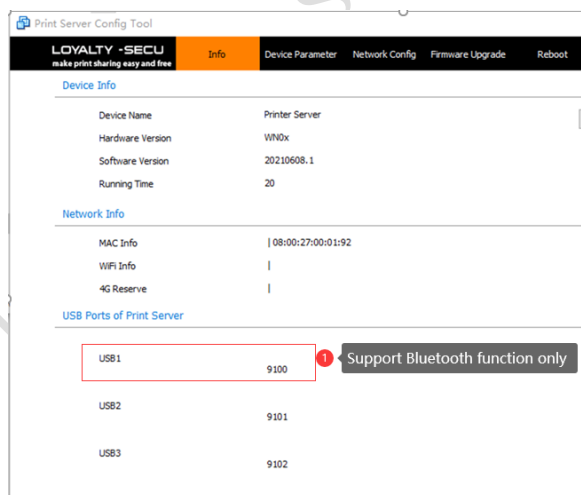


Now all the settings are completed for Bluetooth printing in Windows OS computer, you can explore the printing via Bluetooth function now from computer to printer.

3.3.2. Bluetooth Printing via Android OS

Note:

1. If it is 3 USB Ports Bluetooth Print Server, please kindly note that it only supports **USB1** with Bluetooth function as shown as below:

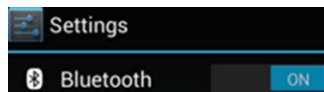


2. Please download "PrinterShare" from the APP Store or website: <http://www.printershare.com> into your Android smartphone first.

Before you start printing, you will need to make sure that Bluetooth is active on your Android device; also make sure that your Android device is paired with your printer. The first time you connect to your printer you will have to download a driver for it as well as document rendering

libraries (Office or PDF) if you choose to print documents.

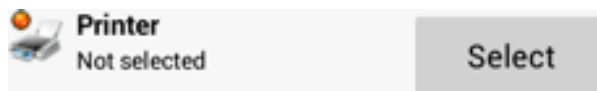
Make sure that Bluetooth is set to **On** in Android Settings.



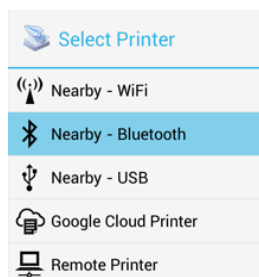
Now that you are certain that Bluetooth is active, make sure that your Android device is paired with your printer in **Android Settings>Bluetooth**. You may need to input a pairing code for your printer.

Take your android device and open PrinterShare by tapping on its icon. If that is the first time you run PrinterShare, you will see a splash screen with two buttons: **Read More** (which will provide you with general information on PrinterShare's functionality) and **Continue**. Tap **Continue** once you are ready to proceed.

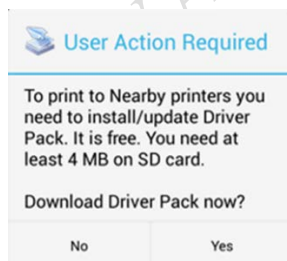
You will see the main PrinterShare screen with a grid of icons that allow you to access various items that can be printed. Below the grid of icons, you will see an icon of a printer with **Printer Not Selected** text and a **Select** button displayed beside it. To **select** your Bluetooth printer, press the Select button.



Now, tap the **Nearby - Bluetooth** button and wait for the app to detect your printer.



When your printer is detected, tap it. The app will then ask for your permission to download a driver for it which will require at least 4MB on your SD card.

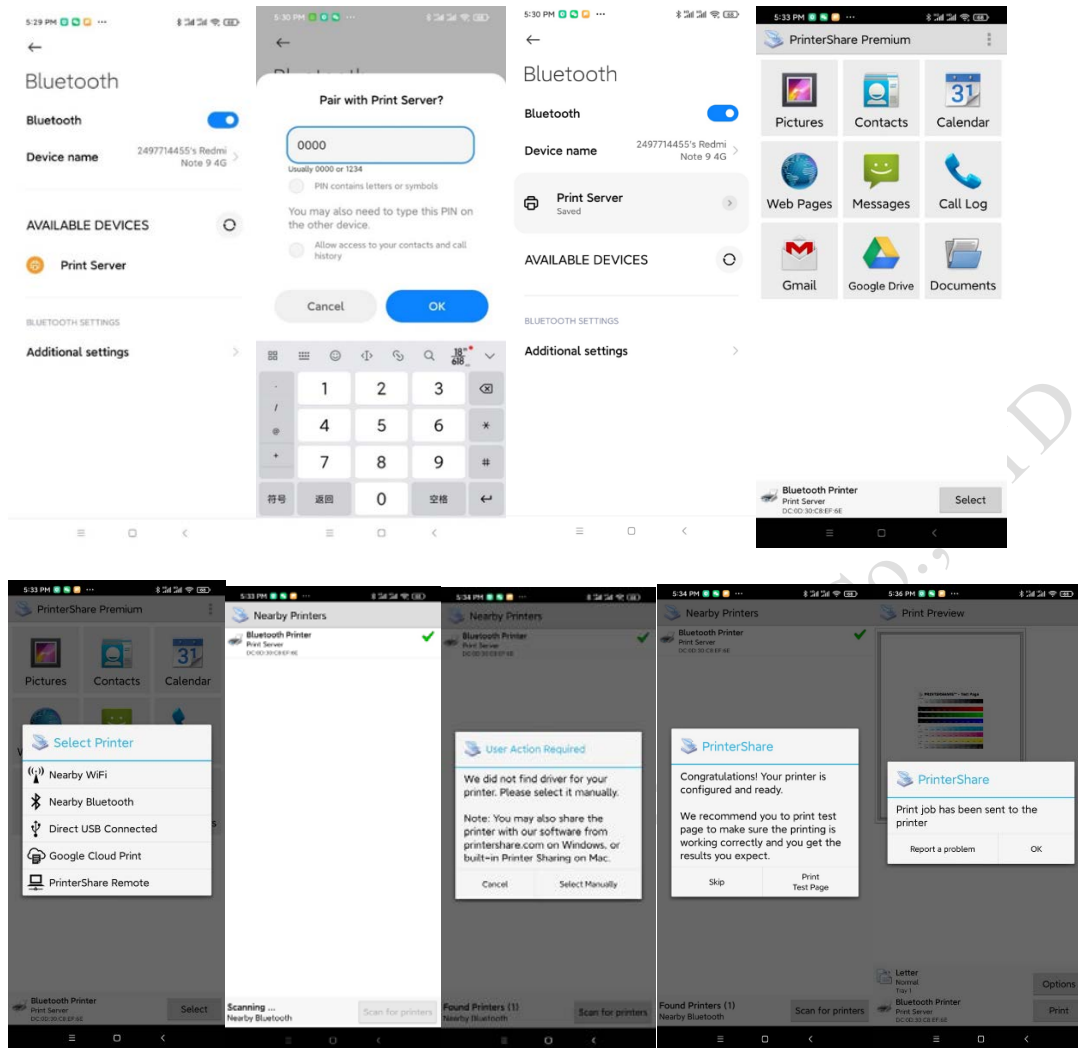


Tap yes and you will be ready to print once the app finishes downloading and installing the driver pack.

Here's the demo setting:

Bluetooth Printer Name: Print Server

Bluetooth Pin Code: 0000



3.5. How to Config WiFi Printing via Android OS Device?

Note: Only support Android OS printing via WiFi

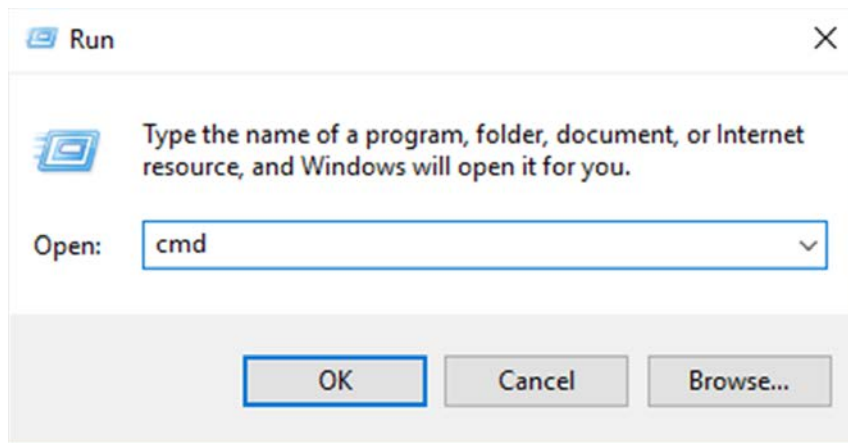
For more information about WiFi Printing via Android OS, please refer to PrinterShare Online Support: <http://www.printershare.com/help-mobile.sdf>

Remarks: As for APP "PrinterShare" only supports to add single port for mobile printing, for 3 USB ports print server, it recommends to use APP "PrintHand"

4. FAQs

4.1. Check if the Print Server already Connected to the Ethernet Successfully or Not?

Steps: Click "Start" menu, and input "Run", or use the WIN+R key combination to call the run window, enter "cmd" in the Run window, click "Ok"



Input PING xxx.xxx.xxx.xxx (print server's IP address)

(Notes: There must have a space between PING and the IP address)

```
C:\WINDOWS\system32\cmd.exe
Connection-specific DNS Suffix  . :
Wireless LAN adapter WLAN:

    Connection-specific DNS Suffix  . : DHCP HOST
    Link-local IPv6 Address . . . . . : fe80::4fd:6f7c:d033:4078%7
    IPv4 Address. . . . . : 192.168.0.104
    Subnet Mask . . . . . : 255.255.255.0
    Default Gateway . . . . . : 192.168.0.1

C:\Users\Hailey>ping 192.168.0.134

Pinging 192.168.0.134 with 32 bytes of data:
Reply from 192.168.0.134: bytes=32 time=23ms TTL=64
Reply from 192.168.0.134: bytes=32 time=9ms TTL=64
Reply from 192.168.0.134: bytes=32 time=10ms TTL=64
Reply from 192.168.0.134: bytes=32 time=18ms TTL=64

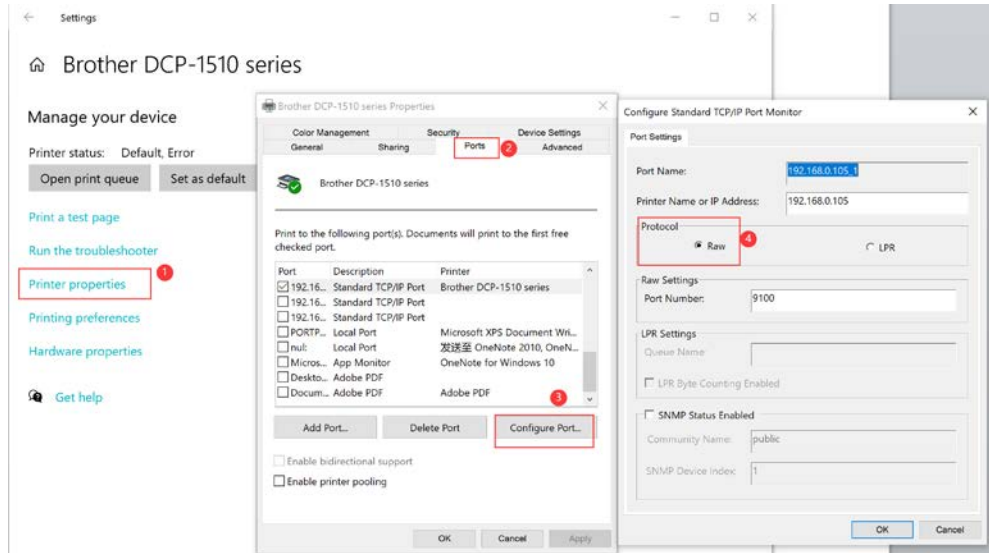
Ping statistics for 192.168.0.134:
    Packets: Sent = 4, Received = 4, Lost = 0 (0% loss),
    Approximate round trip times in milli-seconds:
        Minimum = 9ms, Maximum = 23ms, Average = 15ms

C:\Users\Hailey>
```

it means IP address of print server
Connected

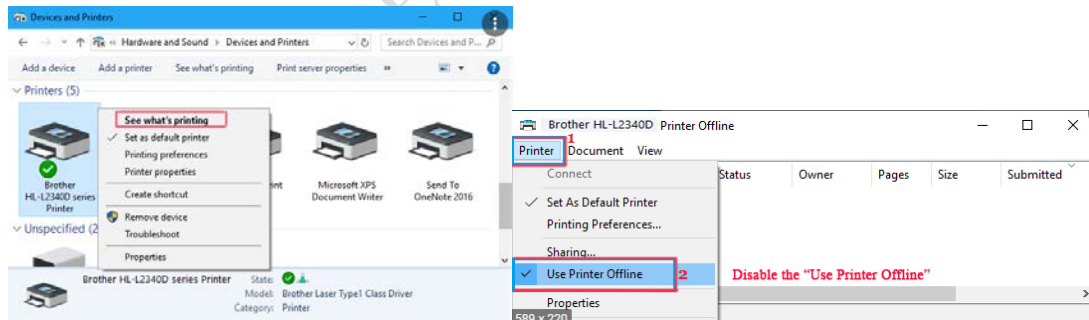
4.2. How to Check if Your USB Printer supports RAW Protocol or Not?

Confirm the printer's default data format "RAW" via "Printer Properties"

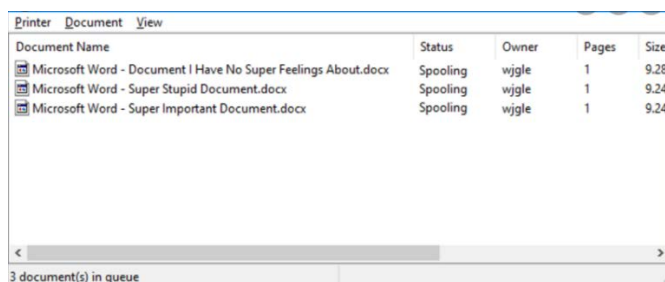


4.3. How to Confirm the Print Issue of Document Pending?

Right-Click the target Printer, Choose "See what's printing", Click the "Printer", Check whether disable the "Use Printer Offline" option as shown as below:



Note: If there are showing some documents are in the queue, please delete all of them.

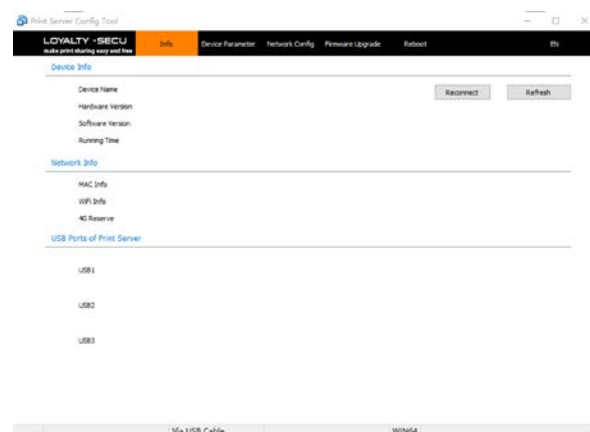


4.4. Why don't We Suggest Using DHCP to Obtain an IP Address?

It is easy to forget the IP address and may assign a different IP address for the print server if we use DHCP to obtain an IP address for the print server.

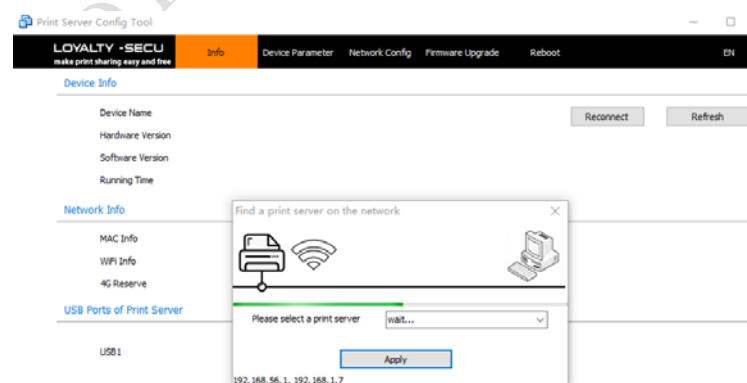
4.5. Why can't the Print Server Config Tool Recognize Print Server via Windows OS?

After being connected to the computer, the print server will automatically power on and start. The entire startup process takes about 20 seconds, then the print server config tool will display a USB sign in the lower-left corner, indicating that the config tool has been identified as the print server as shown as below:



4.6. Why the WiFi Print Server cannot be connected via Network Connection Method?

As shown as below:



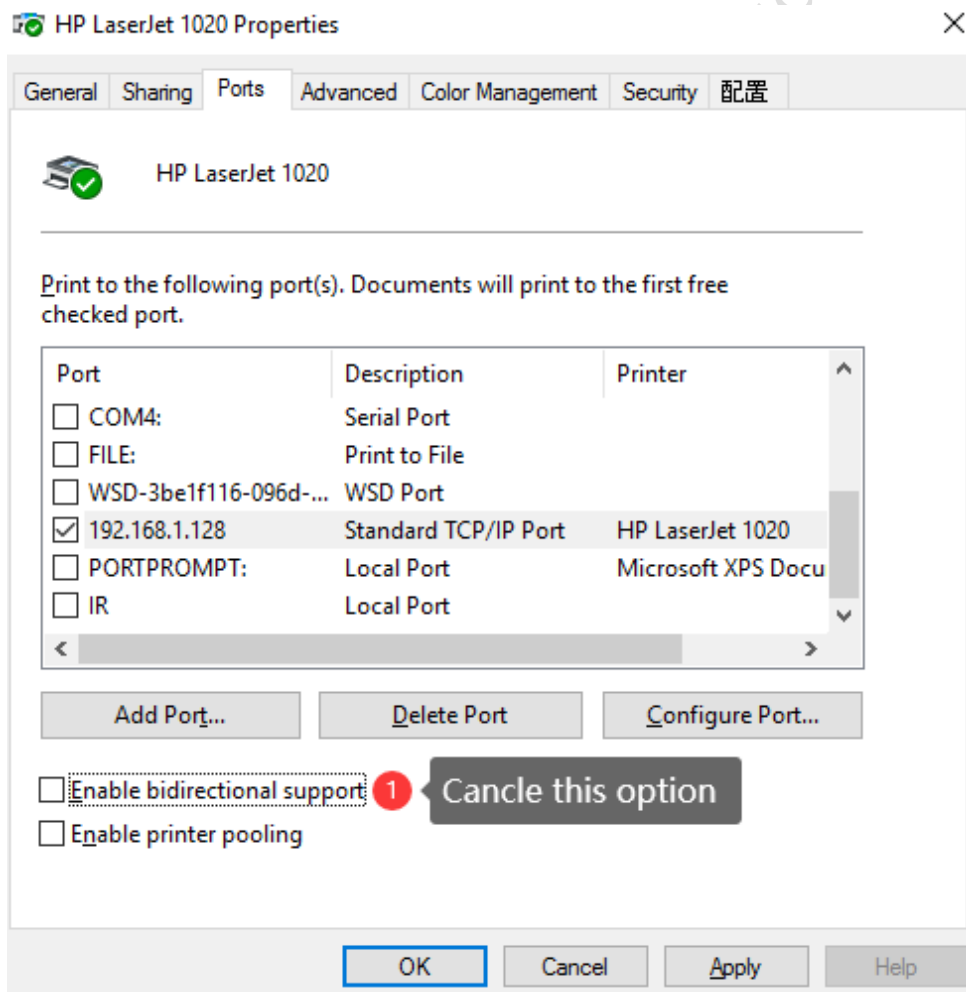
Solution 1: Long Press the “Reset” Button of the print server for 5 seconds.

Solution 2: Make Sure the Wired Network Config Default Mode is “Obtain an IP Addr via DHCP”



4.7. Check Whether Disabled the “Enable bidirectional support” Option or Not

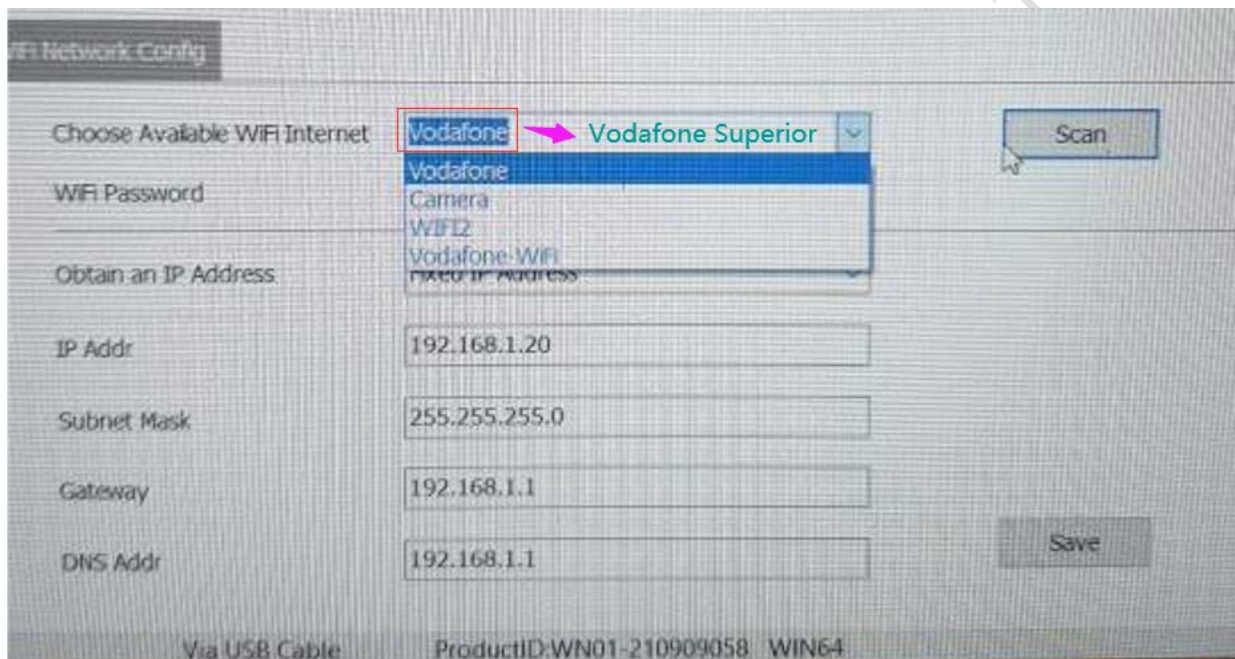
As shown as below:



4.8. Check Whether the Print Server Scanned the Complete WiFi Internet Name

As shown as below:

Eg: When need to connect the print server to **WiFi Internet “Vodafone Superior”**, because there has a space between “Vodafone” and “Superior”, after clicking the “**Scan**” button, the print server only gets the WiFi internet name before the space (**Vodafone**), so the user needs to fill in the complete WiFi Internet name “Vodafone Superior” manually, as below image shows:



Remarks: Only the WiFi internet name and password is correct, after being assigned an IP address for the WiFi print server, this device can be found in your LAN internet.