

ATEX 5 Inch Ex-proof High Speed Dome 2MP 22X PTZ Camera

1. Selling Points	2
2. Brief Introduction.....	3
3. Features.....	3
4. Other Features	4
4.1. Explosion-proof Performance in Line with Industry Standards.....	4
4.2. Real-time Get Notified with Smartphone	4
4.3. Protect Your Property at Night	5
4.4. Smart Automatically Patrol	5
4.5. Waterproof IP67 & Corrosion Resistance.....	6
5. What's Included?.....	8
6. Specification.....	8
7. Product Dimension.....	10

**ATEX EX-proof Security Camera IP67 Outdoor Surveillance System PTZ 2MP 22X Zoom,
Humanoid AI Auto Tracking Cruise, 200M Color Night Vision**

LY-U5-222EX

1.Selling Points

- i. Humanoid Recognition and intrusion detection based on AI intelligent analysis. Supports preset position guards and cruise guards. Face detection function can achieve target counting
- ii. 1920*1080P resolution, support 1080P/60fps delivering smooth full HD video streaming while Pan/tilt/zoom camera.
- iii. Advanced H.265 encoding algorithm, saving storage cost and reduce the network transmission stress; AAC-LC wideband audio coding, high-definition sound quality; support noise suppression. Three-stream encoding capability to meet real-time streaming and storage streaming requirements of different bandwidths and frame rates
- iv. 22X Optical zoom, 5.4- 114.4mm, 200M IR distance, no blind spot monitoring in all directions, accuracy of positioning 0.1° , With pan tilt station, its Horizontal Range speed is 0° ~360° continuously, Vertical Range speed is -10° ~90° , Rotation Speed is 0.05° ~ 240° /s. With 256 presets, 4 pcs cruising track, trajectory self-learning function. Meanwhile, Built-in auto-focus algorithm, with the characteristics of fast speed and accurate focusing
- v. The shell is made of high quality 304 stainless steel, corrosion protection and explosion-proof, IP67 waterproof. Circular arc appearance, exclusive mold casting, the industry's first, beautiful and generous housing. The camera' lower cover is made of high-quality aviation plastic transparent material, high hardness, strong light transmittance, brings the high quality images without any distortion.
- vi. Support any brand NVR with ONVIF protocol and other brands NVR with mainstream private protocol
- vii. Accept the customization, includes optical zoom, camera resolution, camera work distance, camera types and so on. (like, Hikvision, Dahua, Uniview, XM, Tiandy, Seetong and other brands for option).

2. Brief Introduction



ATEX 5 Inch Ex-Proof High Speed Dome 2MP 22X PTZ Camera

The explosion-proof PTZ cameras have been certified and designed to meet strict standards regarding installation in potentially explosive environments, given the presence of gas and flammable dust. The wide range ensures excellent performance for monitoring critical processes and it is the perfect video surveillance solutions for chemical, oil and gas industries. Their sturdiness and zero maintenance make these products suitable for use in extreme environmental conditions and offer a level of quality beyond any expectations.

3. Features

- i. Intelligent analysis/ Face detection/ Behavior detection/ Auto Tracking
- ii. 304 stainless steel material design, explosion proof PTZ Dome cooling system
- iii. Explosion-Proof grade: Exd II C T6 Gb/ Ex tD A21 IP68 T80°C
- iv. H.265/H.264, 1920*1080P@60fps, adopts the solution of Uniview Zoom Camera Module
- v. 22X Optical zoom, 5.4- 114.4mm lens
- vi. Color: 0.005Lux, B/W: 0.0005Lux, 0Lux with IR, auto IR-cut switch, Star-light illumination and 120dB WDR
- vii. Exclusive Curved Spherical Shape, Can Be Used in Corrosive Environment
- viii. Support ONVIF protocols, can be seamlessly integrated into the Uniview backend devices
- ix. With Wall & Ceiling Mount Bracket for option
- x. Free APP: EZview
- xi. Power Supply: DC12V4

4. Other Features

4.1. Explosion-proof Performance in Line with Industry Standards

Explosion-proof performance meets GB3836.1-2010 "Explosive Atmosphere Part 1: General Requirements for Equipment";

GB3836.2-2010 "Explosive Atmosphere Part 2: Equipment Protected by: Flameproof Enclosure "d";

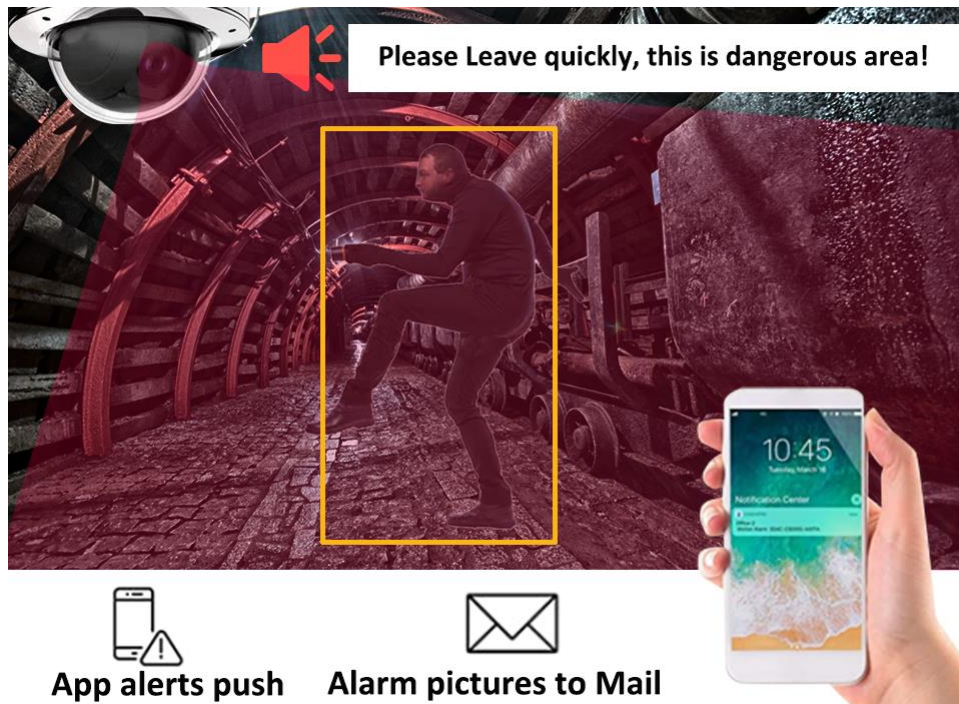
GB12476.2-2013 "Electrical Equipment for Combustible Dust Environment Part 1: General Requirements";

GB12476.5-2013 "Electrical Equipment for Flammable Dust Environment Part 5: Enclosure Protection Type "tD" is made into an explosion-proof structure.



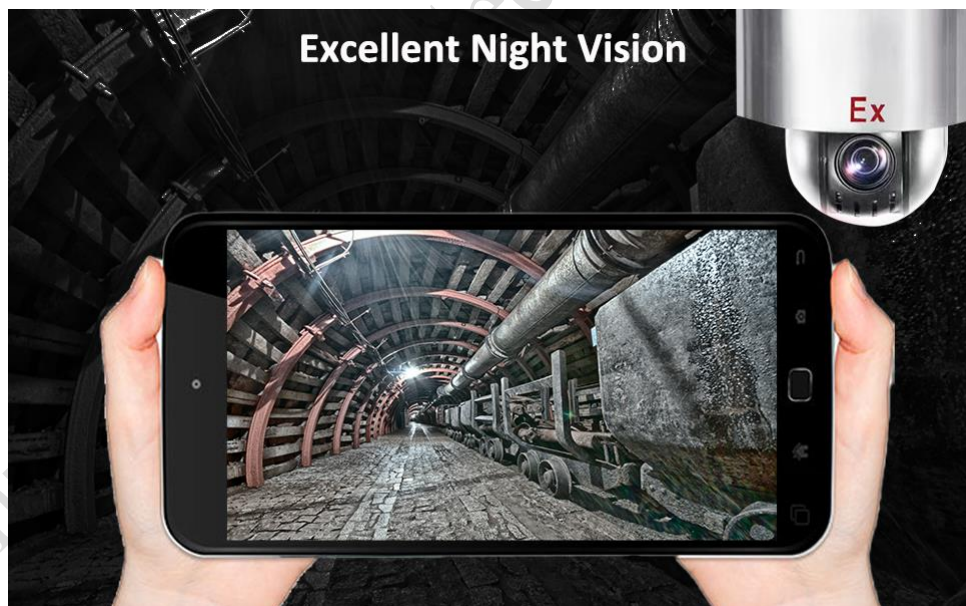
4.2. Real-time Get Notified with Smartphone

PTZ IP camera can real-time push alarm message to your smartphone with installed with APP EZview(IOS& Android) if it detects any suspect at the front-end, as Ex-proof PTZ camera comes with built-in mic & speaker allows users to speak with anyone on the camera's end through smartphone app with warning decal for compliance purpose.



4.3. Protect Your Property at Night

Your property will be covered by the superior night vision of LOYALTY-SECU PTZ camera. The infrared illumination distance can reach up to 200M depending on the scene. Meanwhile, it supports starlight function also to offer you a color night vision.



4.4. Smart Automatically Patrol

Support preset cruise points, time and speed-patrol in the monitoring zone you cared!

Patrol: Up to 4 patrol groups;

Preset: 10 presets per patrol group

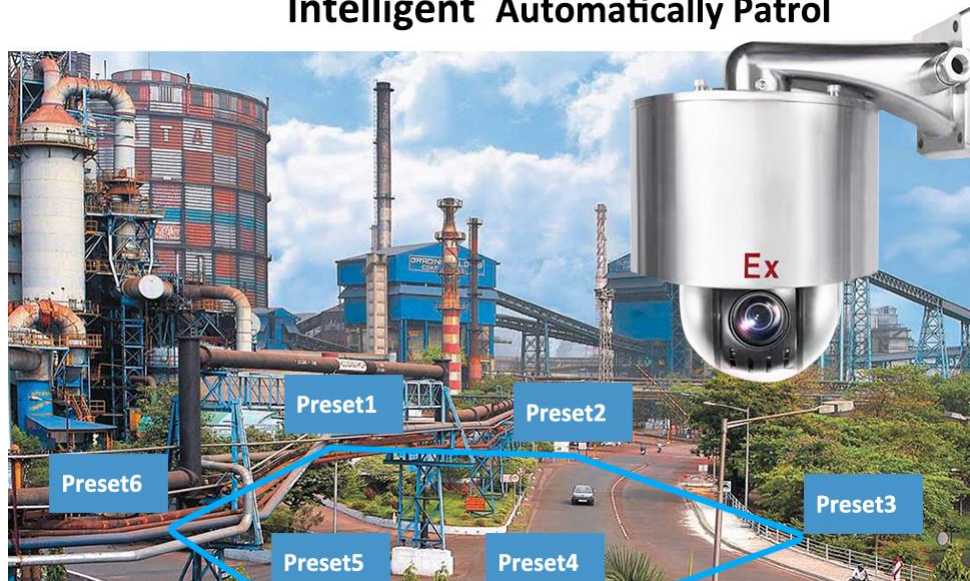
Patrol time: Adjustable

Our PTZ Security Camera supports "Cruise" and "Auto Tracking" simultaneously!

Secure your cares through both Cruise and Auto Tracking

- i. When there is no human movement detected, the PTZ security camera will cruise according to your preset trajectory.
- ii. When there is human detection, this network security camera will auto tracking the human until the human disappears in the field of view. Then it will resume cruise.

Intelligent Automatically Patrol



4.5. Waterproof IP67 & Corrosion Resistance

LOYALTY-SECU Ex-proof network PTZ camera offers the highest level of corrosion resistance thanks to its solid 304 stainless-steel constructions. As well as this, the IP67 waterproof guarantees complete protection against water and dust.



4.6. Support Local Storage& Remotely View & Playback

The Ex-proof PTZ Camera with the latest H.265 video compression, that means it will generate about 24x2GB/1080P per day, and our PTZ camera supports 256GB at most, then it can storage for over 5days in local. Make sure that you won't miss any important event. Meanwhile you can play videos via your mobile phone APP directly, in addition to play back the videos, it also allows you to perform the pan and tilt functions of the PTZ camera, as well as the zoom function.



4.7. Application Scenarios

Ex-proof Full-HD PTZ camera is ideal for effective preventative video surveillance and process monitoring in the Oil & Gas, maritime or industrial sectors where fire or explosion hazards may exist due to the presence of flammable gases or vapors, flammable liquids or combustible dusts.



5. What's Included?

Manual, Camera, Wall Bracket(default), a 12V4A Power Adapter and Installation Screws

6. Specification

Camera	
Model	LY-U5-222EX
Image Sensor	1/2.8" CMOS
Minimum Illumination	Color: 0.005Lux, B/W: 0.0005Lux, 0Lux with IR
3D NDR	Support
WDR	120dB
Electronic Shutter	AUTO/MANUAL; 1~1/100000s
Day Night Mode	AUTO ICR Color to B/W
Focal Length	22X Optical zoom, 5.4- 114.4mm
Aperture	Auto/manual, aperture range: F1.5~F3.8
Resolution	1080P (1920*1080) up to 60fps
Video streaming	Triple stream
Video Compression	H.265/H.264
Network protocol	L2TP,IPv4,IGMP,ICMP,ARP,TCP,UDP,DHCP,PPPoE,RTP,RTSP,DNS,DDNS

	,NTP,FTP,UPnP,HTTP,SNMP,SIP
Interface protocol	ONVIF 2.4
Front-end storage	Support Micro SD storage, up to 256GB
AI Function	
Behavior detection	Cross-border, regional intrusion, enter into the area, leaving the area, wandering, fast moving, people gathering, parking, item leftover, item moving
Intelligent Recognition	Face Detection
Auto Tracking	Support
PTZ Control	
IR Distance	200m
Horizontal Range	0°~360° continuously
Vertical Range	-10°~90°
Rotation Speed	0.05°~240°/s
Preset	256
Patrol scan	4groups(10 preset for each)
L/R Scan	1group
Horizontal Scan	1group
Power-off memory	Support
General	
Explosion-proof mark	Ex d IIC T6 Gb/Ex tD A21 IP68 T80°C
Cover material	304 stainless steel
Work environment	Temperature : -20~60°C · humidity<90%
Size(mm)	Φ264.2×184mm
GW	8KG
Power Supply	12V/4A

7.Product Dimension

