

## 6 Inch 5MP 33X POE Starlight WDR IP PTZ Dome Camera

### Auto-tracking

1. Selling Points .....	2
2. Brief Introduction .....	3
3. Features.....	3
4. Other Features .....	4
4.1. Auto-tracking.....	4
4.2. Power over Ethernet Plus.....	5
4.3. Dual Audio Solution.....	5
4.4. Get Notified with Smartphone.....	6
4.5. Protect Your Property at Night.....	6
4.6. Smart Automatically Patrol .....	7
4.7. Waterproof IP66 & 6000V Thunder-proof .....	8
4.8. Support Local storage and playback.....	8
4.9. Intelligent WDR Function& Real Color .....	9
5. What's Included?.....	9
6. Specification .....	9
7. Product Dimension:.....	11

LOYALTY-SECU Auto-tracking Starlight 33X Optical Zoom 5MP IP PoE+ Outdoor PTZ Camera, Two-Way Speaking High Speed Security PTZ Dome, Long Range Infrared Night Vision up to 250ft with 120db WDR

## LY-U6-533P

### 1.Selling Points

- i. **6inch 5MP Pan Tilt Zoom IP Camera:** 6-inch POE IP PTZ dome camera, full HD 5MP video resolution with 33X zoom, H.265 video compression saves half storage space, lower storage cost.
- ii. **Smart Tracking Makes Surveillance Effective:** This mini PTZ IP camera is able to do face detection and multi-behavior detection, and push alarm message to your phone in real time. Also, it can automatically follow the people's movement and intelligently return to the original guard position until the human leave monitoring area, giving your family and property more protection without missing some important details. Meanwhile, our security camera is powered by the high speed motors to deliver enhanced smooth tracking experiences.
- iii. **Pan Tilt Zoom Capacity:** 0.05°~240°/s; PTZ range: Horizontal: 0~360°, Vertical: -5°~90°; 4.5-148.5mm lens, 33X Optical Zoom.
- iv. **Night Vision Day/Night Switch:** 6pcs OSRAM IR Array LEDs + 4pcs Laser LEDs, Intelligent Auto Switch, IR-Cut True Night Vision up to 250m(820ft). It is able to see up to 250m(820ft) away from the camera with a switchable low beam/high beam LED set at night/starlight vision in response to different levels of zoom.
- v. **Smartphone Setup & Control PTZ Camera live Streaming:** Apart from watching live view & playbacks, controlling pan tilt zoom actions, you can also remotely set/delete/call presets and view motion detection snapshots (stored in cloud server with push alarms) through the EZView app.
- vi. **Power of Ethernet Solution:** The camera supports PoE+ 802.3bt standard that draws 48w per port (a PoE+ injector/switch is included). You can power the PTZ camera using 65w super POE injector, and the POE transmission distance up to 150M.

## 2. Brief Introduction



### 6inch 5MP 33X IR Auto-tracking PTZ IP Dome Camera Outdoor

The High Speed PTZ Camera adopts the advanced Uniview solution, it's not only bringing the rich AI Functions, such as Face Detection, Auto-Tracking for long-distance video surveillance, Multi-behavior Detection, but also delivers great video quality, reliable operation, a long & stable operating life, and a wonderful using experience.

The 33X IP PTZ Dome Camera can be used indoor and outdoor area to monitor the large area, with the Pan Tilt Zoom feature, one PTZ Camera can replace more than 5pcs conventional fixed lens IP camera which with constant angle, money & labor saving greatly.

## 3. Features

- i. H.265 efficient decoding for reduced bandwidth and storage space while recording
- ii. 5 Megapixel 2592 x1944@25fps, 2592 x1520@30fps/25fps,1920 x1080@30fps/25fps, 33X optical zoom
- iii. High speed pan tilt zoom with 360 degrees endless horizontal rotation, -5 degrees upward tilt and 90 degrees downward movement
- iv. 6pcs OSRAM IR Array LEDs+4pcs Laser LEDs, long range infrared LED night vision up to 250m(820ft)
- v. Support ONVIF 2.4, Uniview private protocol, P2P, PC/iOS/Android remote control
- vi. 120dB true WDR technology enables clear image in strong light scene
- vii. Two-way audio with built-in mic & speaker allow users to speak with anyone on the camera's end through smartphone app with warning decal for compliance purpose.
- viii. Industrial-level IP66 waterproof shell with an operating temperature rating at -20~60°C to

tackle extreme weathers

- ix. **Power over Ethernet: Important- PoE+(802.3bt) required with 65W output.**

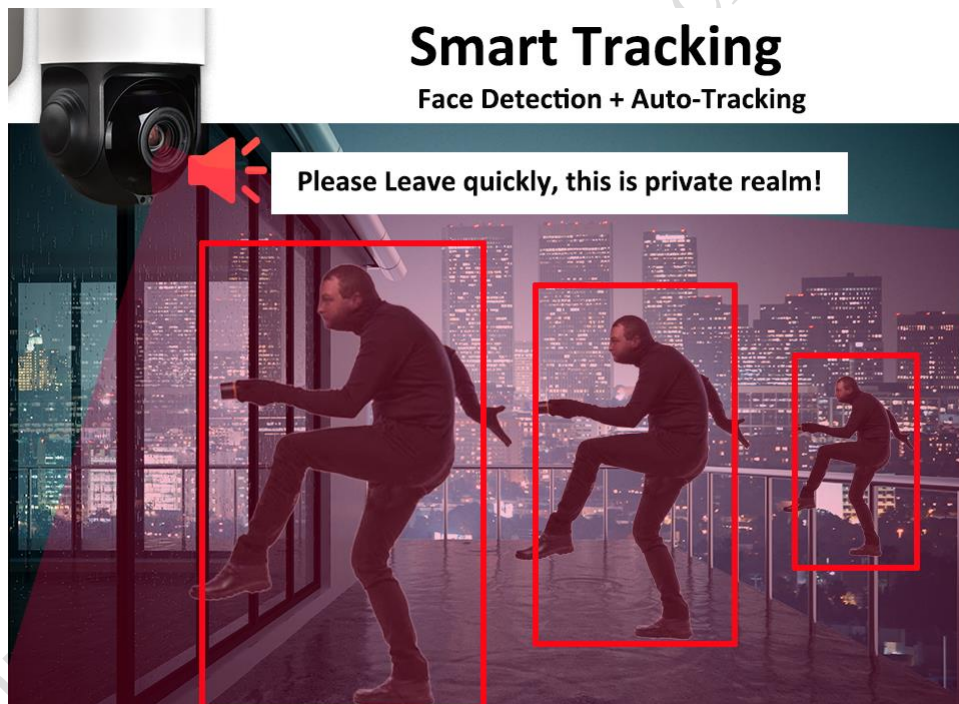
## 4. Other Features

### 4.1. Auto-tracking

The Network PTZ dome camera supports Face Detection, Multi-behavior Detection, like, cross border detection, regional invasion, entering area, leaving area, wandering detection, rapid movement, personnel gathering, parking detection, items left behind, objects movement. It can auto-tracking the above objects once detection is triggered.

Loyalty-secu is keeping on improving the performance of AI, like, Face Detection, Multi-behavior Detection and auto-tracking to reduce false alarms, make the real push notification to be sent to your phone app or your mailbox!

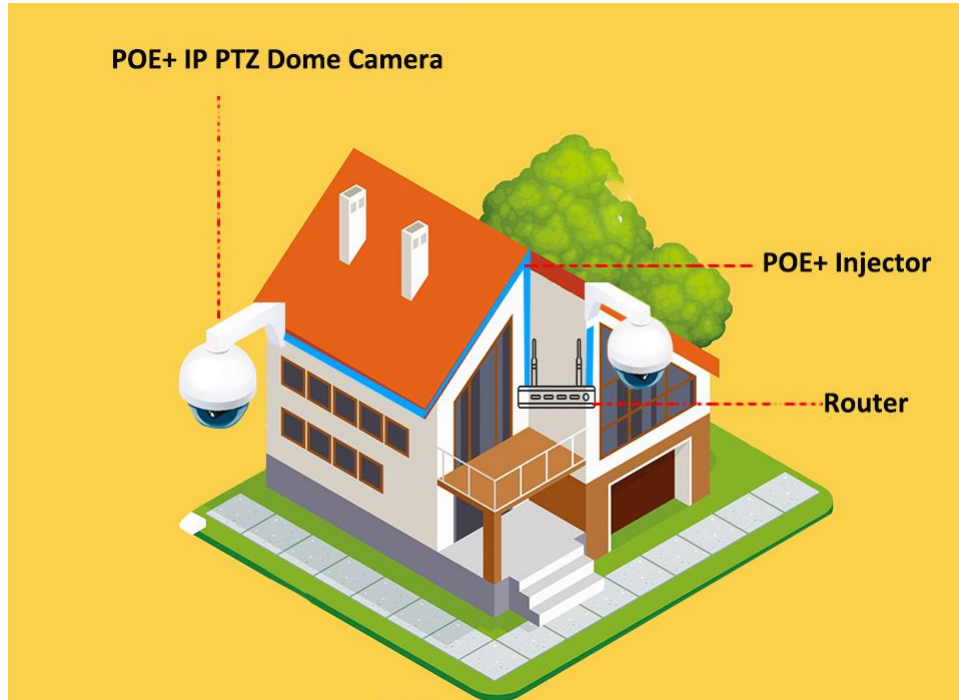
In order to track the target in motion and keep it in the scene all the time, our Network PTZ camera can control the pan/tilt/zoom actions accurately. Once detection is triggered, the camera can zoom in and then track the target automatically.



## 4.2. Power over Ethernet Plus

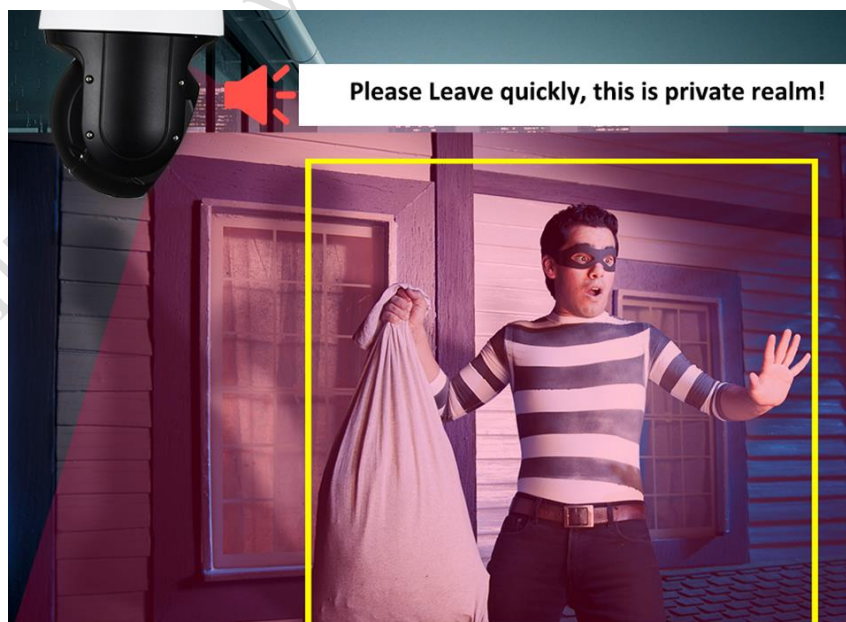
PTZ camera built-in POE+(IEEE802.3bt) 48W, comes with a standard 65w super POE injector, and the POE transmission distance up to 150M.

12VDC 4A (if using the optional power adapter). Higher voltage will damage the unit.



## 4.3. Dual Audio Solution

PTZ IP camera comes with built-in mic & speaker allows users to speak with anyone on the camera's end through smartphone app with warning decal for compliance purpose.



#### 4.4. Get Notified with Smartphone

Remotely watch live view & playback and control PTZ/Preset through EZView app (iOS & Android) with motion detection snapshot stored in cloud server. Cloud platform registration required to enable push notification.



#### 4.5. Protect Your Property at Night

Your property will be covered by the superior night vision of LOYALTY-SECU PTZ camera with 6pcs OSRAM IR Array LEDs+4pcs Laser LEDs. The infrared illumination distance can reach up to 250m(820ft) depending on the scene.

##### Excellent Night Vision



## 4.6. Smart Automatically Patrol

**Customized Presets and Curies - Monitor and patrol in any direction you cared!**

Patrol: Up to 4 patrol groups;

Preset: 10 presets per patrol group

Patrol time: Adjustable

**Our PTZ Security Camera supports "Cruise" and "Auto Tracking" simultaneously!**

**Secure your cares through both Cruise and Auto Tracking.**

- i. When there is no human movement detected, the PTZ security camera will cruise according to your preset trajectory.
- ii. When there is human detection, this network security camera will auto tracking the human until the human disappears in the field of view. Then it will resume cruise.

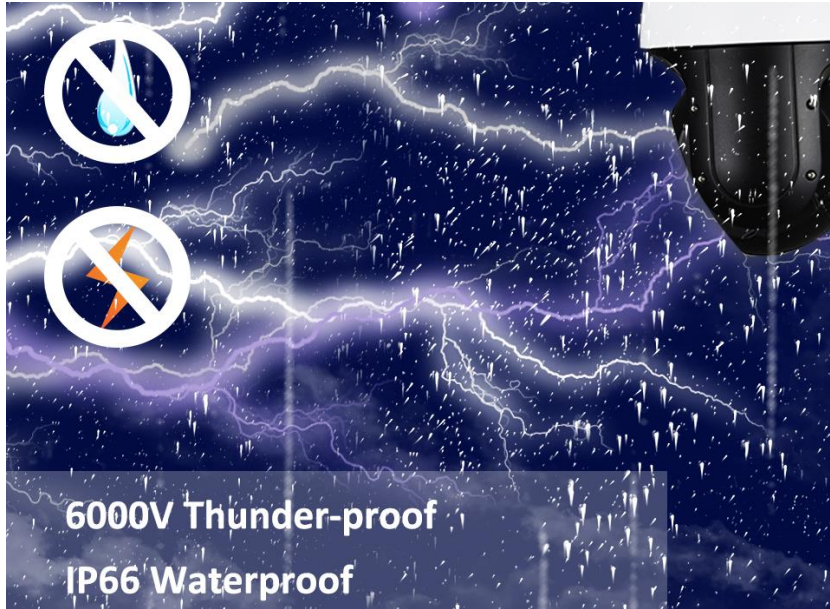
### Intelligent Cruise Tracking

**Automatically Patrol**



#### 4.7. Waterproof IP66 & 6000V Thunder-proof

The security outdoor camera is equipped with an IP66 rated weatherproof metal shell and supports **6000V Thunder-proof**, designed to operate the security PTZ camera even in some real extreme weather conditions.



#### 4.8. Support Local storage and playback

The PTZ camera supports micro SD card up to 256GB. Insert a Micro SD card, and then it is a completed remote home security system. When the SD card is full, the new recordings will overwrite the old ones, it can make sure the recording of security camera working normally all the time. Meanwhile you can play videos via your mobile phone APP directly.





#### 4.9. Intelligent WDR Function& Real Color

With true WDR technology, it can produce images of good clarity even under varying light conditions by using different shutter speeds to allow more light in some darker areas of the image and less light in others brighter. The sensor's exposure to light-receiving from the exterior environment is controlled to achieve a compensated vision.



### 5. What's Included?

Manual, Camera, Wall Bracket (default), a 65W PoE injector and installation screws.

### 6. Specification

Camera	
Model	LY-U6-533P
Camera Solution	Uniview Solution, MSTAR Solution
Sensor	1/2.8 inch, 5.0 megapixel, progressive scan, CMOS
Minimum Illumination	0.005lux (F1.5, 50IRE, color) 0.0005lux (F1.5, 50IRE, white/black)
Storage space	Max 256GB Micro SD card

3D NDR	Support
WDR	120db
Electronic Shutter	AUTO
Day Night Mode	AUTO ICR Color to B/W
Focal Length:	4.5-148.5mm, 33X Optical Zoom
Zoom Speed	Approx.4s(Optical Wide~Tele)
Angle of View:	55.4-2.9°(Wide-Tele)
Resolution	2592(H)x1944(V)
Main Stream	2592 x1944@25fps, 2592 x1520@30fps/25fps,1920 x1080@30fps/25fps
Sub Stream	D1@30fps/25fps, VGA@30fps/25fps, 640×360@30fps/25fps
Video Compression	H.265/H.264
Network protocol	HTTP/RTSP/RTMP/DHCP/NTP/ONVIF/NTP/UPNP/GB28181
Interface protocol	ONVIF 2.4, Uniview private protocol
AI function	
Behavior detection	Cross border detection, regional invasion, entering area, leaving area, wandering detection, rapid movement, personnel gathering, parking detection, items left behind and objects movement.
Anomaly detection	Motion detection, sound detection
Intelligent identification	Face detection
Auto-tracking	Support
APP	EZView
PTZ Control	
IR Distance	250m(820ft)
LEDs	6pcs OSRAM IR Array LEDs + 4pcs Laser LEDs
Horizontal Range	0°~360° continuously
Vertical Range	-5°~90°
Vertical/Horizontal Speed	0.05°~240°/s
Max Speed	240°/S
Preset	256
Patrol scan	4groups(10 preset for each)
L/R Scan	1group

Horizontal Scan	1group
Power-off memory	Support
PARK Action	Watch position/ Area Scan /Horizontal 360°scan/ Cruise
Watch position	Support
Wide angle speed limit	Focus / speed automatic matching function
General	
POE supply voltage	DC48V
POE Supply Pin	1,2(+) 3,6(-) / 4,5(+) 7,8(-) Auto adapting (IEEE802.3at)
Power/Consumption	DC12V/4A,<22W
Mounting	Wall mounting or lifting
Work environment	Temperature : -20~60℃; Humidity<90%
Protection level	IP66 waterproof, 6000V lightning protection
GW(KG)	4.5KG

## 7.Product Dimension:

