

5 Inch 5MP 33X POE IP PTZ Camera Auto-tracking Outdoor

1. Selling Points .....	2
2. Brief Introduction.....	3
3. Features.....	3
4. Other Features .....	4
4.1. Smart Tracking.....	4
4.2. Power over Ethernet Plus.....	4
4.3. Dual Audio Solution.....	5
4.4. Get Notified with Smartphone.....	6
4.5. Protect Your Property at Night.....	6
4.6. Smart Automatically Patrol .....	7
4.7. Waterproof IP66 & 6000V Thunder-proof .....	8
4.8. Support Local storage and playback.....	9
5. What's Included?.....	9
6. Specification.....	9
7. Product Dimension.....	11

**LOYALTY-SECU 5MP Starlight IP PoE+ Outdoor PTZ Camera, 33X Optical Zoom @H.265, 24x7 Auto-tracking, Long Range Infrared Night Vision up to 150M(492ft)**

LY-E5-533P

## 1.Selling Points

- i. **5inch 5MP PTZ Camera Outdoor POE:** Compact size 5-inch PTZ IP dome camera, full HD 5MP video resolution with H.265 video compression saves half storage space, lower storage cost.
- ii. **Smart Tracking Makes Surveillance Effective:** This 33X PTZ IP camera is able to distinguish between people and animals, reducing 95% false alarms caused by rain, leaves, and insects. It can automatically follow the people's movement and intelligently return to the original guard position until the human leave monitoring area, giving your family and property more protection without missing some important details. Meanwhile, our security network PTZ camera is powered by the high speed motors to deliver enhanced smooth tracking experiences.
- iii. **Pan Tilt Zoom Capacity:** 0.05~240°/s; PTZ range: Horizontal:0~360°, Vertical:-5~90°, 4.5-148mm lens, 33x Optical Zoom.
- iv. **Night Vision Day/Night Switch:** 6pcs OSRAM IR Array LEDs + 4pcs Laser LEDs, Intelligent Auto Switch, IR-Cut True Night Vision up to 150M(492ft). It is able to see up to 150M(492ft) away from the camera with a switchable low beam/high beam LED set at night vision in response to different levels of zoom.
- v. **Smartphone Setup & Control PTZ Camera Live Streaming:** Apart from watching live view & playbacks, controlling pan tilt zoom actions, you can also remotely set/delete/call presets and view motion detection snapshots (stored in cloud server with push alarms) through the Smartviewer Pro app.
- vi. **Power of Ethernet Solution:** The camera supports PoE+ 802.3bt standard that draws 48w per port (a PoE+ injector/switch is included). You can power the PTZ camera using 65w super POE injector, and the POE transmission distance up to 150M(492ft).

## 2. Brief Introduction



### 5inch H.265 5MP 33X IR Auto-tracking PTZ POE IP camera Outdoor

Loyalty-Secu 5 Inch 5MP IP PTZ Camera adopts the high accuracy stepping motor, work with the high performance motor driver, which ensures the PTZ IP camera work under a stable, accurate, and less vibration condition. Meanwhile, it supports with 5A Functions: Auto white balance, Auto focus, Auto exposure, Auto noise reduction, Auto contrast enhancement

The Loyalty PTZ Network Camera Auto-tracking integrates the powerful features like Intelligent Analysis, Active Defense, Auto Tracking (high accuracy humanoid detection recognition, intelligent AI alert auto zoom tracking), high speed pan tilt zoom ability, perfect dynamic monitoring image display, brings an excellent security experience.

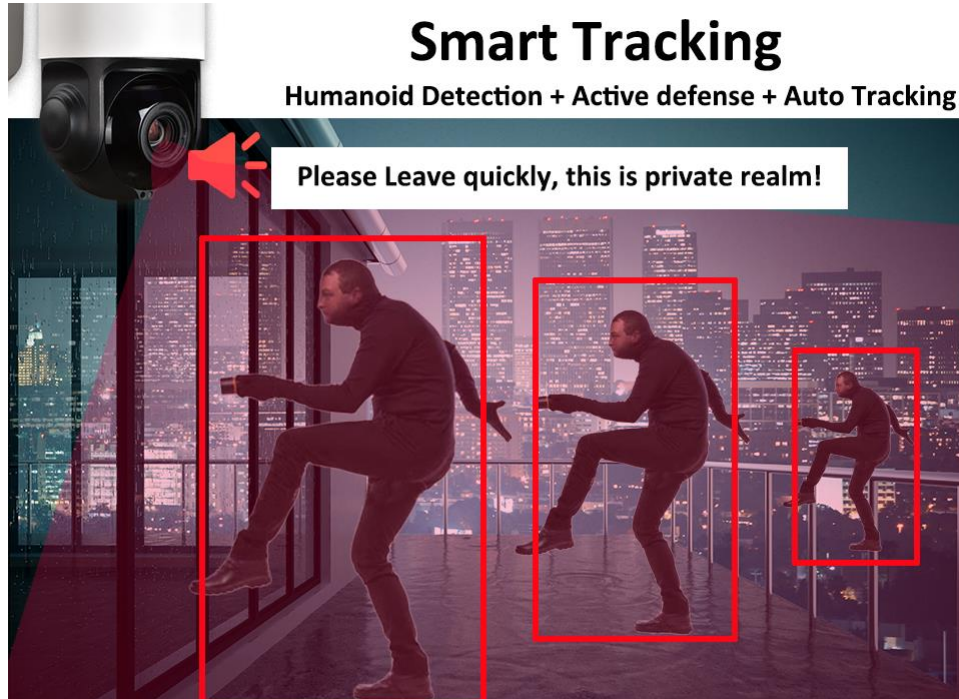
## 3. Features

- i. H.265 efficient decoding for reduced bandwidth and storage space while recording
- ii. 5 Megapixel 2592×1944@30fps, 2592×1520@30fps, 1920×1080@30fps, 33X optical zoom
- iii. High speed pan tilt zoom with 360 degrees endless horizontal rotation, -5 degrees upward tilt and 90 degrees downward movement
- iv. 6PCS OSRAM IR Array LEDs + 4PCS Laser LEDs , IR distance up to 150M(492ft)
- v. Support ONVIF protocol, Hikvision private protocol, i9, S-link protocol etc.
- vi. Two-way audio with built-in mic & speaker allow users to speak with anyone on the camera's end through smartphone app with warning decal for compliance purpose.
- vii. Industrial-level IP66 waterproof shell with an operating temperature rating at -20~60°C to tackle extreme weathers.
- viii. **Power over Ethernet: Important- PoE+(802.3bt) required with 65W output.**

## 4. Other Features

### 4.1. Smart Tracking

Humanoid Detection + Active defense + Auto Tracking



The Network PTZ dome camera supports preset position guard and cruise guard to recognize humanoid automatically. Once the detection is triggered, the security PTZ dome camera automatically turns to the target position, flashing the visible light, and the audio output line drives the live speaker to send out the voice.

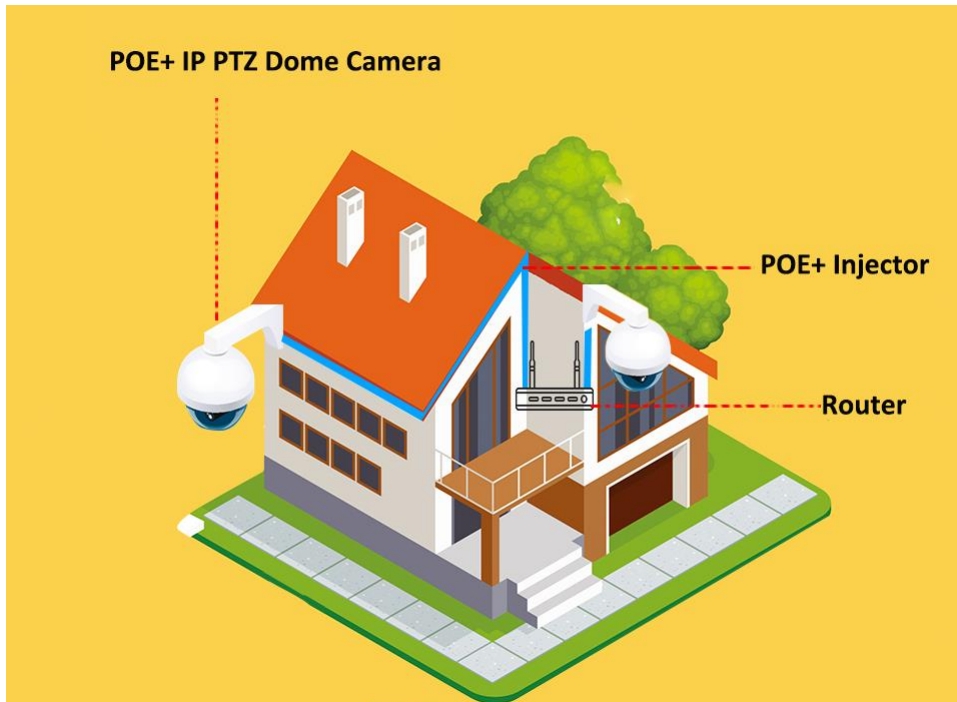
Any object enter to the intrusion area, the PTZ camera switches to the center of object immediately, security camera zooming automatically as the object moves, so the security guard can have a clear sight at the object, convenient the to track the suspicious person and collect on-site digital evidence.

In order to track the target in motion and keep it in the scene all the time, our Network PTZ camera can control the pan/tilt/zoom actions accurately. Once detection is triggered, the camera can zoom in and then track the target automatically.

### 4.2. Power over Ethernet Plus

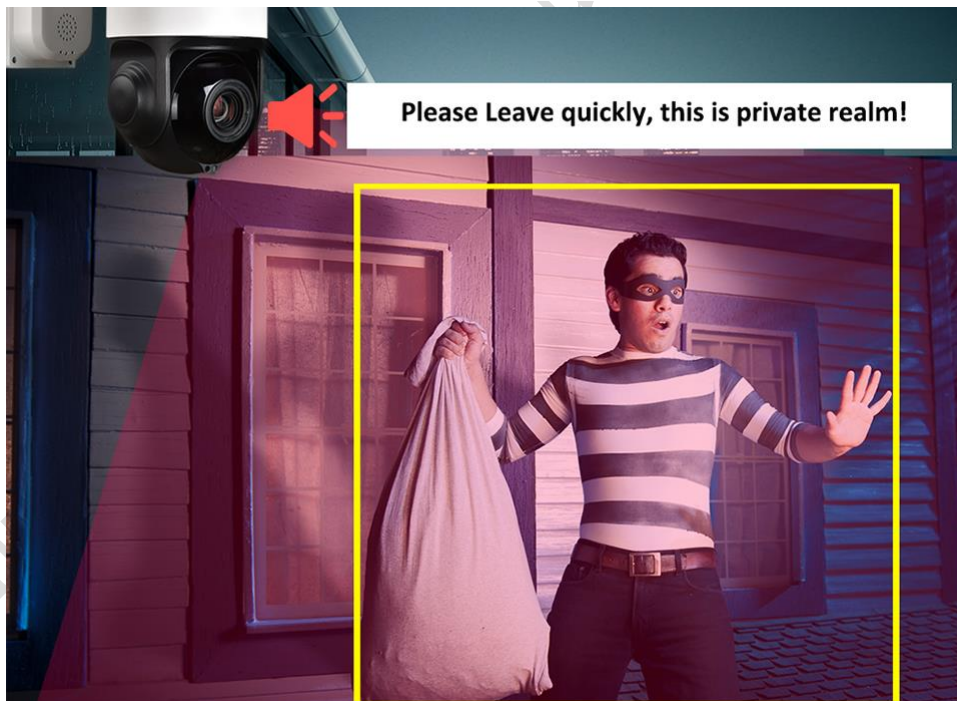
IP PTZ camera built-in POE+(IEEE802.3bt) 48W, comes with a standard 65w super POE injector, and the POE transmission distance up to 150M(492ft)

12VDC 2A (if using the optional power adapter). Higher voltage will damage the unit.



### 4.3. Dual Audio Solution

PTZ IP camera comes with built-in mic & speaker allows users to speak with anyone on the camera's end through smartphone app with warning decal for compliance purpose.



#### 4.4. Get Notified with Smartphone

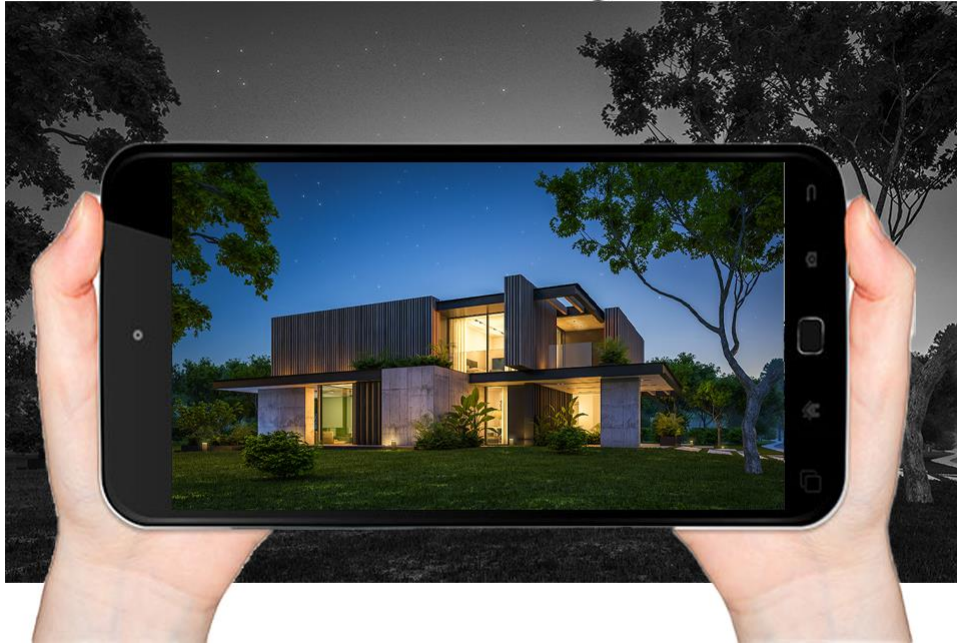
Remotely watch live view & playback and control PTZ/Preset through Smartviewer Pro app (iOS & Android) with alarm message pushed.



#### 4.5. Protect Your Property at Night

Your property will be covered by the superior night vision of 33x IP PTZ camera outdoor with 6PCS OSRAM IR Array LEDs + 4PCS Laser LEDs. The infrared illumination distance can reach up to 150M(492ft) depending on the scene.

## Excellent Color Night Vision



### 4.6. Smart Automatically Patrol

**Support preset cruise points, time and speed-patrol in the monitoring zone you cared!**

Patrol: Up to 4 patrol groups;

Preset: 10 presets per patrol group

Patrol time: Adjustable

**Our PTZ Security Camera supports "Cruise" and "Auto Tracking" simultaneously!**

**Secure your cares through both Cruise and Auto Tracking**

- i. When there is no human movement detected, the PTZ security camera will cruise according to your preset trajectory.
- ii. When there is human detection, this network security camera will auto tracking the human until the human disappears in the field of view. Then it will resume cruise.

## Intelligent Cruise Tracking

Automatically Patrol



### 4.7. Waterproof IP66 & 6000V Thunder-proof

The security outdoor camera is equipped with an IP66 rated weatherproof metal shell and supports **6000V Thunder-proof**, designed to operate the security PTZ camera even in some real extreme weather conditions.



**6000V Thunder-proof**  
**IP66 Waterproof**



## 4.8. Support Local storage and playback

The PTZ camera supports micro TF card up to 128GB. Insert a TF card, and then it is a completed remote home security system. When the TF card is full, the new recordings will overwrite the old ones, it can make sure the recording of security camera working normally all the time. Meanwhile you can play videos via your mobile phone APP directly.



## 5. What's Included?

Manual, Camera, Wall Bracket (default), a 65W PoE injector and installation screws.

## 6. Specification

Camera	
Model	LY-E5-533P
Camera Solution	Hi3516Ev300+GC4653
Minimum Illumination	Color: 0.001Lux, B/W: 0.001Lux,0 Lux with IR (Starlight Ultra low illumination)
3D NDR/WDR	Support
Electronic Shutter	Auto

Day Night Mode	AUTO ICR Color to B/W
Focal Length:	4.5-148mm,33X Optical Zoom, (F1.6 to F2.7)
Zoom Speed	Approx.4s (Optical Wide~Tele)
Angle of View	55.4-2.9°(Wide-Tele)
Resolution	2592(H)x1944(V)
Mainstream	2592×1944@30fps, 2592×1520@30fps, 1920×1080@30fps
Sub Stream	D1@30fps, VGA@30fps, 640×360@30fps
Video Compression	H.265/H.264/MJPEG
TF card	Max 128GB
Network protocol	HTTP/RTSP/RTMP/DHCP/NTP/ONVIF/NTP/UPNP/GB28181
Interface protocol	ONVIF 2.4
APP	SmartViewer Pro
AI Function	Humanoid Detection+ Active Defense+ Auto Tracking
PTZ Control	
IR Distance	150M(492ft)
LEDs	6PCS OSRAM IR Array LEDs + 4PCS Laser LEDs, IR Distance 150M(492ft)
Horizontal Range	0°~360° continuously
Vertical Range	-5°~90°
Vertical/Horizontal Speed	0.05°~240°/s
Max Speed	240°/S
Preset	256
Patrol scan	4groups (10 preset for each)
L/R Scan	1group
Horizontal Scan	1group
Power-off memory	Support
PARK Action	Watch position/ Area Scan /Horizontal 360°scan/ Cruise
Watch position	Support
Wide angle speed limit	Focus / speed automatic matching function
General	
POE supply voltage	DC48V
POE Supply Pin	1,2(+) 3,6(-) / 4,5(+) 7,8(-) Auto adapting (IEEE802.3bt)

Power/Consumption	DC12V/2A,<15W
Mounting	Wall mounting or lifting
Work environment	Temperature : -20~60℃; Humidity<90%
Protection level	IP66 waterproof,6000V lightning protection
GW(KG)	2.5KG

## 7.Product Dimension

