

2MP Network IR Explosion Proof Camera

LY-EX-NFC-02-IR

Main Features:

- **2MP/1080P, Camera Solution: Hikvision Network Camera Module**
- **Camera Lens: 4/6/8/12/16/25mm is optional**
- **IR Distance up to 50M**
- **AC220V/DC12V/POE Is Available**
- **Using High Quality 304 Stainless Steel Material, 316 & 316L for Option**
- **Explosion-Proof Mark: Exd IIC T6 Gb/ Ex tD A21 IP68 T80°C**
- **Support ONVIF protocols, can be seamlessly integrated into the Hikvision backend devices.**
- **Video Compression: H.265/H.264/MJPEG**



1080P Flameproof IP PTZ Camera

Explosion-proof performance in accordance with GB3836.1-2010 "Explosive atmospheres --Part 1: Equipment-- General requirements", GB3836.2-2010 "Explosive atmospheres --Part 2: Equipment protection by flame-proof enclosures "d" ", GB12476.2-2013 "Electrical apparatus for use in the presence of combustible dust-- Part 1: General requirements", GB12476.2-2013 "Electrical apparatus for use in the presence of combustible dust-- Part 5: Protection by enclosures "tD", made of Explosion-Proof structure.

Main Features:

- * The shell is made of high-quality 304 stainless steel, anticorrosive and explosion-proof, waterproof, dust proof, IP68 (316 & 316L stainless steel is optional in special anticorrosive environment).
- * 2MP/1080P, high performance CMOS Sensor, Hikvision HD network camera solution.
- * 4mm/6mm/8mm/12mm/16mm/25mm fixed lens is optional.
- * With high quality array LEDs, IR work distance up to 50M.
- * Power supply: AC220V/DC12V/POE is available.
- * With realtime H.265/H.264/MJPEG Encoding.
- * Support HTTP, TCP/IP, DNS, DDNS, PPPOE and others protocols.
- * Support motion detection and privacy masking.
- * SDK for second development, preview via IE browser.
- * According to the client requirements, integrates the transceiver module & wireless transmission module, heating equipment and so on
- * Accept the camera customization, includes camera lens , camera resolution, camera work distance, camera types and so on. (Hikvision, Dahua, Uniview, XM, Tiandy , Seetong and other brands for option).

Application Environment:

With flammable gas of IIA, IIB, IIC, the ignition temperature group is zone 1 and zone 2 of T1-T6 group, places where flammable gas or explosive mixture of vapor and air is formed; it is also applicable to the 21 zone and 22 zone of the T1-T6 group of ignition temperature, places containing combustible dust mixtures, such as:

petroleum, chemical industry, mines, military industry, medicine, oil depots, ships, drilling platforms, gas stations, natural gas stations, gas stations, fireworks production, food processing and storage, etc.

Explosion-Proof 2MP IP Camera Datasheet:

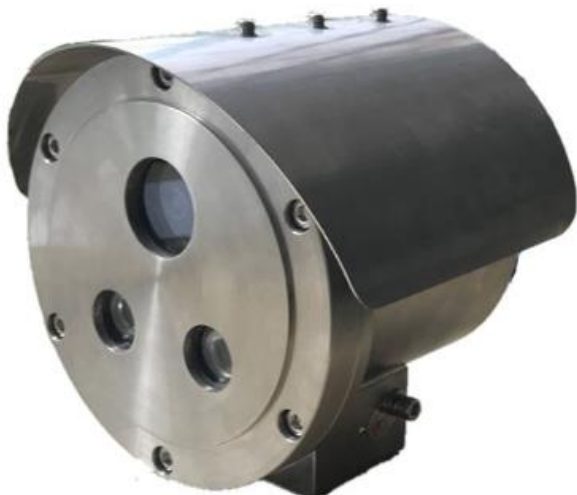
Camera	
Model	LY-EX-NFC-02-IR
Explosion-Proof Mark	Exd IIC T6 Gb / Ex tD A21 IP68 T80°C
Image Sensor	1/2.7" Progressive Scan CMOS
Camera Solution	Hikvision 2MP Network Camera Solution
MCU	Hisilicon chipset and high performance DSP
Electronic Shutter	1/3S to 1/100,000 S
IR Distance	30/50/80M(For optional)
Day/Night Mode	Double filter automatic switching (IR-cut)
Camera Lens	4mm/6mm/8mm/12mm/16mm/25mm and other HD 3MP lens is optional
WDR Range	120dB
Backlight Compensation	Support, area can be self-define
DNR	3D DNR
Video Compression	H.265/H.264/MJPEG
Video Bitrate	64Kbps-8Mbps
Main Stream	1920x1080,1280*960,1280*720
Sub Stream	D1,VGA,640*360,CIF,QVGA
Video Frame Rate	1~25fps
Character Superimposition	Support channel name, date/time data superimposition ,overlay position is adjustable, can reverse color
Image Setting	Backlight compensation, HLC ,saturation ,brightness , contrast ratio, sharpness ,Gain ,Data Rate ,Code Rate ,Frame Rate can be configured via CMS or IE Browser
Network Protocol	TCP/IP,HTTP,DHCP,DNS,RTP/RTCP ,PPPoE ,FTP ,SMTP,NTP,SNMP
Interface Protocol	ONVIF,PSIA,CGI,ISAPI, GB/T28181 and others

Time Display	Support time information superposition ,up /down/left/right is adjustable
Channel Display	Support 30 characters, up /down/left/right is adjustable
Motion Detection	Yes
Privacy Masking	4 Areas for setting
SNR	> 52dB
White Balance	Auto
Gain Control	Auto
Electronic Shutter	Auto
WDR	Digital wide dynamic range
Others	
Material	Quality 304 stainless steel (Can be used in corrosive environment, stainless steel 316 and 316L is optional)
IP Grade	IP68
Supply Voltage	AC110V~220V/DC12V/POE is optional
Operating Current	≤2000mA
Environmental Temperature	-25°C~70°C
Atmospheric Pressure	86~106KPa
Relative Humidity	≤95%RH (+25°C)
Electrical Connection	Composite cable (Include Power cable and RJ45 Cable)
Installation	Tripod head or Fixed Bracket
Cable Entry	G 1/2" * 1 or G 3/4" * 1
Product Dimension	Φ160mm ×280 mm
Weight	≤6Kg

(The above camera solution is using Hikvision 2MP Camera Module, other solution is available for option in our company)

Remarks: One model may with multi-versions and several configurations, for final product details, please confirm with the sales staff directly.

Product Images:



Product Dimension:

