

5MP Panoramic Smart Linkage Multi-Sensor Multi-Lens High Speed Fixed & PTZ Camera System 18X Optical Zoom

Product Highlights:

5 In 1 Fixed Lens and Zoom Lens PTZ Camera System

Model: LY-MTL-5L5A-18X

*Intelligent Analysis + Panoramic Smart Linkage + Auto-Tracking+ Multi-Lens
+Multi-Sensor +Multi-Objects

* Fixed & PTZ Camera Smart Linkage System:

4x 5MP 270° Multi-sensor Panoramic + 1x 5MP 360° PTZ

5MP 4 pcs × Fixed Lens: 6mm/ F1.0, 5MP 1 pcs × Zoom Lens (5.5-99mm), 18X
Optical Zoom

* Camera Solution: 5MP,5 ×SigmaStar377+GC4653 (ColorVu Super Starlight)

***5 in 1 Camera with 1 RJ45 Cable Interface, Output 5 Images:**

All 5 cameras integrate into one camera housing work via one network cable
interface, inputs 5 channel recording images.

* With built-in Microphone

* Fixed & PTZ Camera Linkage Monitoring System, support tracking multiple
objects simultaneously

* Money & time saving, facilitates real-time management.

* 18X Zoom PTZ camera Magnified image to detect target details for global detail
monitoring. More accurate tracking with close-up images

* Color Night Vision & Full Metal Housing

* High Speed PTZ 0.05-240°/S, 360° all-frame endless rotation

* Waterproof: IP66, Lighting protection: 6000V

LOYALTY-SECU



Overview:



5 In 1 Panoramic Smart Linkage Multi-Objects High Speed PTZ Camera Fixed & PTZ Camera Linkage System

**4x 5MP 270° Multi-sensor Panoramic + 1x 5MP 360° PTZ
Smart Linkage Monitoring System:**

LOYALTY-SECU provides a professional video intelligent solution for monitoring of specific occasions by means of Fixed Lens + PTZ Zoom Lens all in one camera, this kind of combination called “**Fixed & PTZ Camera Linkage Monitoring System.**”

LOYALTY-SECU Panoramic Multi-sensor Fixed and PTZ Camera Linkage System combines four (4) 5MP sensors working in circle to create a comprehensive 270° view, and a high-speed 5MP 18X PTZ camera to focus on a specific area of the scene. With the 5 in 1 camera housing design, the 5MP Fixed Lens & PTZ Zoom Camera System provides a 270° panorama and provides region of interest details at the same time. The 4x 5MP 270° Multi-sensor Panoramic + 1x 5MP 360° PTZ camera can detect different types of moving objects in the monitoring scene. When some targets appear in the fixed cameras monitoring area, the PTZ dome camera will automatically track the target and automatically zoom in on the target and capture the close-up images, brings a convenient identification of face and humanoid.

With the **Multi-Lens Multi-Objects Fixed & PTZ Camera Smart Linkage** technology, fixed cameras are applied to detect and analyze objects in the occasions which under the monitoring. Based on the intelligent detection CMS, the PTZ(Pan/Tilt/Zoom) camera will track and zoom on the object detected by the fixed cameras. One PTZ 18X zoom camera work with 4 fixed cameras to monitor a large

outdoor area. Using LOYALTY-SECU 5-in-1 Fixed & PTZ Camera System, users no longer need to ask installers to install 5 independent surveillance cameras, which saves time, trouble, and money, and is also very easy to manage. Particularly suitable for wide range monitoring, such as villa, office, factory, city roads, safety city project, plazas, harbor, entrances and exits, crossroads, and parks, etc.



4x 5MP Multi-sensor Panoramic + 1 x 5MP 18X Zoom PTZ Network Camera

Main Features:

*With built-in AI (Intelligent analysis) functions: warning line, linkage alarm triggers the auto-tracking & zoom of the object among the guard area. Integrate with humanoid recognition & intrusion detection function.

* Equipped with 4 pcs fixed 6mm/ F1.0 wide angle cameras monitoring system + 1 pcs 18X zoom PTZ camera, ensure the global & close-up surveillance

* 5 In 1 PTZ Camera System:

5 Lens Design: 4 PCS Fixed Lens cameras 5MP (Lens: 6mm/ F1.0) +1 PCS PTZ camera 5MP, Lens: 5.5-99mm (18X zoom)

4x 5MP 270° Multi-sensor Panoramic + 1x 5MP 360° PTZ

*4 Fixed-focus cameras for 240° panoramic monitoring, 18X zoom PTZ camera magnified image to detect target details for global detail monitoring

* ColorVu Super Star-light, Color night vision

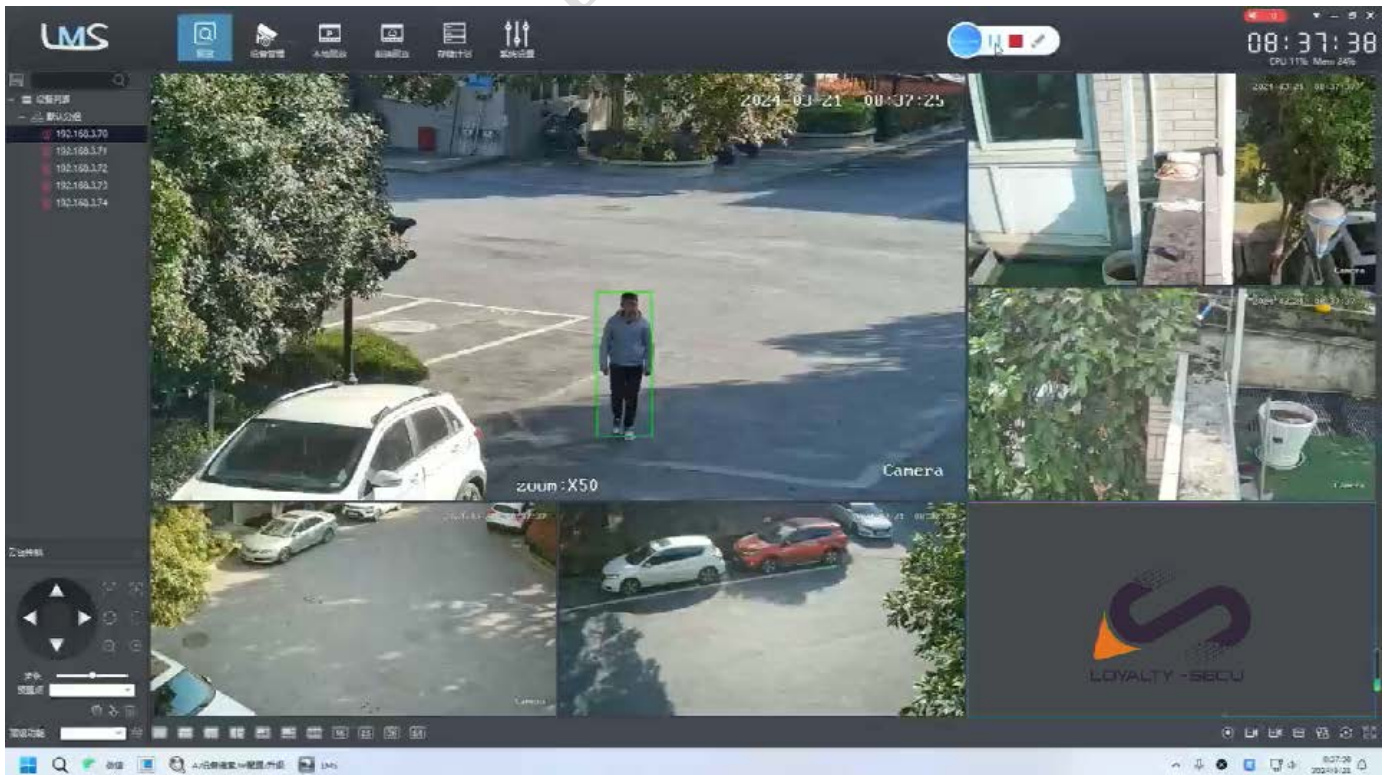
* High Speed PTZ 0.05-240°/S, 360° all-frame endless rotation

- * Panoramic Smart Linkage auto-tracking
- * Using LOYALTY-SECU 5-in-1 Fixed & PTZ Camera System, users no longer need to ask installers to install 5 independent surveillance cameras, which saves time, trouble, and money, and is also very easy to manage.
- * Full metal housing, Waterproof: IP66, Lighting protection: 6000V
- * **5 in 1 Camera with 1 RJ45 Cable Interface, Output 5 Images:**

All 5 cameras integrate into one camera housing work via one network cable interface, inputs 5 channel recording images.

- * Professional CMS Supports: Linkage Auto-tracking, Warning Auto-tracking, Face detection.
- * Using the high accuracy stepping motor, work with the high-performance motor driver, ensure the PTZ camera work under a stable, accurate, and less vibration condition.
- * With the multi-lens technology, fixed cameras are applied to detect and analyze objects in the occasions which under the monitoring. Based on the intelligent detection CMS, the PTZ(Pan/Tilt/Zoom) camera will track and zoom on the object detected by the fixed cameras.
- * One PTZ 18X zoom camera work with 4 fixed cameras to monitor a large outdoor area, particularly suitable for wide range monitoring, such as villa, office, factory, city roads, safety city project, plazas, harbor, entrances and exits, crossroads, and parks, etc.

Scenario: villa, office, factory, city roads, safety city project, plazas, harbor, entrances and exits, crossroads, and parks, etc.



**4x 5MP 270° Multi-sensor Panoramic 1x 5MP 360° PTZ Specification:**

Camera	
Model	LY-MTL-5L5A-18X
Image Sensor	1/2.8" CMOS
Camera Types	5 pcs× SigmaStar377+GC4653
Minimum Illumination	Color: 0.001Lux, B/W: 0.001Lux,0 Lux with IR ColorVu Super Star-light
Camera Lens	4 pcs×6mm/F1.0 Fixed lens + 1pcs × 5.5-99mm Zoom Lens
3D NDR	Support
WDR	Support
Electronic Shutter	Auto
Day Night Mode	AUTO ICR Color to B/W
Focal length	18X Optical zoom, 5.5- 99mm
Zoom speed	Approx.3s (Optical Wide~Tele)
Built-in Microphone	Yes
Panoramic field of view:	270°
PTZ angle of view:	52-2.9°(Wide-Tele)
Resolution	2592(H) x1944(V)
Mainstream	2592 x1944@30fps,2592 x1520@30fps,1920 x1080@30fps
Video compression	H.265+/H.265/H.264H
Network protocol	HTTP,TCP/IP,IPv4,DHCP,NTP,RTSP,ONVIF,P2P,PPTP,GB/T281 81
Interface protocol	ONVIF 2.4
APP	AC18Pro or Video-Link
PTZ Control	
Color Night Vision	Yes
Infrared Night Vision	Default camera, don't have infrared night vision, support to custom this function
Horizontal range	0° ~ 360° continuously
Vertical range	-5° ~ 90°
Horizontal speed	0.05° ~ 240°/s

Vertical speed	0.05° ~ 100°/s
Max Speed	240°/S
Preset	256
Patrol scan	4pcs (10 preset for each)
L/R Scan	1pc
Horizontal scan	1pc
Power-off memory	Support
PARK action	Watch position/ Area Scan /Horizontal 360°scan/ Cruise
Watch position	Support
General	
Power	DC12V/4A
Consumption	< 30W
Mounting	Wall mounting or lifting
Work environment	Temperature: -20 ~ 60°C; Humidity < 90%
Protection level	IP66 waterproof, 6000V lightning protection
Single Camera Packing Size	29.5*29.5*38cm, (Not include the bracket)
Single Camera GW	4.2KG
Carton box	61.5*61.5*38cm (4pcs/carton), (Not include the bracket)
Carton GW	18Kg
Single Bracket Packing	32*10*19cm(0.8KG)

Camera Dimension:

Dimension

Unit: mm

