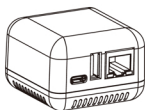


Quick User Guide

Accessories

Standard accessories



1 USB port print server

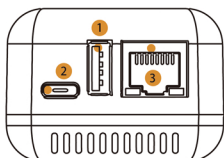


5V power adapter



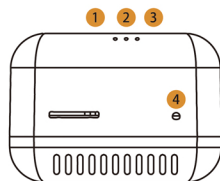
Type-c data cable

Interface Description



1. USB port for printer connection
2. Power/Config port
3. RJ45 port

1 Status Indication



1. Power supply
2. USB connection
3. Internet connection
4. Reset button

2 Config Tool Download

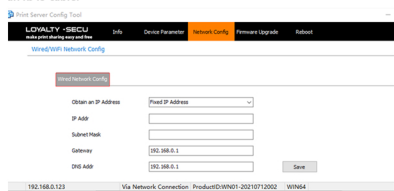


Scan the QR code or visit the following link to download the device config tool and user manual:

Download link: <https://loyalty-secutech.com/print-server-data-download/>

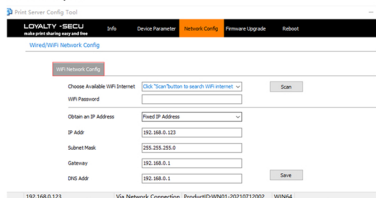
3 Config Tool Interface (Wired)

Wired Network Configuration: Connect the print server to the internet using an RJ45 cable.



4 Config Tool Interface (WiFi)

WiFi Network Configuration: Connect the print server to the internet using a WiFi hotspot.



5 Computer Printing (Win/Mac)

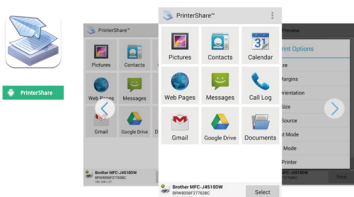
Print server configuration is supported only on Windows OS.

Windows98/XP/7/8/10/11



Open the config tool to set the print server configuration. Add a printer and set a standard TCP/IP port for the printer. Explore printing on your PC. Port number: 9100

6 APP Download (Android)



Download the "PrinterShare" or "PrintHand" app from Google Play.

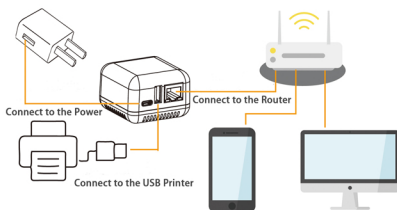
7 Bluetooth Printing

To use Bluetooth Print Server printing:



1. Connect the Bluetooth Print Server to the USB Printer using a USB cable.
2. Power on both the Bluetooth Print Server and the USB Printer.
3. Obtain the Bluetooth Networking COM Number of the Print Server and assign it to the USB Printer.

8 Workflow



Making Print Sharing Easy and Free!